

# UltraTough M&I

# OWNERS MANUAL



## STATEMENT OF WARRANTY

### UltraTough M&I, UltraBig M&I, PosiDrive M&I High Speed Doors EXCLUSIVE LIFETIME SBR FABRIC WARRANTY

**Albany Door Systems** warrants to the original owner of the door that the styrene-butadiene rubber (SBR) fabric door panel (curtain) will be free of defects in materials and workmanship for the **lifetime** of the door. Door panels (curtains) made of EPDM are warranted for a period of **five (5) years**. This warranty covers material failure under normal wear conditions; it does not cover labor, polyethylene terephthalate (PET) weave, windlok, roll strips, and windows after the first **twelve (12) months**. Use of petroleum-based products on the door panel (curtain) will void this warranty.

### ONE-YEAR WARRANTY ON MECHANICAL AND ELECTRICAL COMPONENTS

- **Albany Door Systems** warrants to the original owner of the door that the mechanical and electrical components will be free from defects in material and workmanship for a period of **one (1) year** from the date of shipment.. The warranty does not cover fuses, heat lamp elements, bulbs, seals and straps.
- Only defects brought to the attention of **Albany Door Systems** during the warranty period will be covered by this warranty.
- **Albany Door Systems** will replace component parts covered by this warranty, which are found to be defective upon inspection by an **Albany Door Systems** representative. Installation or use of parts other than those authorized by **Albany Door Systems** will void this warranty.
- PARTS AND ASSEMBLIES sold separately by **Albany Door Systems** that fail due to defects in material or workmanship within **ninety (90) days** from the date of shipment will be replaced under warranty provided installation has been carried out in accordance with all **Albany Door Systems** procedures. This warranty is limited to providing a replacement part only. This warranty does not cover freight, special charges, or any costs associated with the installation of the replacement part.
- This warranty covers material failure under normal wear conditions; it does not cover damage caused by collision or other abuse of the product. Adjustments made to the control panel or to the mechanical operation of the door without the authorization of **Albany Door Systems** will void this warranty. Any changes made to product configuration without the express written approval from Albany Door Systems may null and void this warranty.
- **Albany Door Systems'** obligations under this warranty are limited to repairing or replacing the defective part including labor and **Albany Door Systems** shall not be responsible for any other losses or damages due to the operation of any door or parts covered by this warranty. Warranty parts will be shipped regular ground freight at the expense of Albany Door Systems.
- This warranty shall be void in its entirety if the failure of any product shall be caused by any installation, operation, or maintenance of the product which does not conform with the requirements set forth by the seller in the applicable product manuals or is in the result of any cause other than a defect in the material or workmanship of the product.
- No other oral or written representations made by **Albany Door Systems** or its agents are a part of this warranty unless specifically set forth in writing by an authorized **Albany Door Systems** official.

**THE ABOVE SET FORTH WARRANTY IS SELLER'S SOLE WARRANTY. SELLER MAKES NO OTHER WARRANTY OF ANY KIND WHATSOEVER, EXPRESSED OR IMPLIED; AND ALL IMPLIED WARRANTIES OF MERCHANTABILITY AND FITNESS FOR A PARTICULAR PURPOSE WHICH EXCEED THE AFORESTATED OBLIGATION ARE HEREBY DISCLAIMED BY SELLER AND EXCLUDED FROM THIS AGREEMENT.**

### WARNING

**Do not install, operate or service the product unless you have read and understand the safety practices, warnings, installation and maintenance instructions contained in this manual.**

# TABLE OF CONTENTS

**Introduction** ..... 3

**Product Description** ..... 4

**Safety Advice** ..... 5

**Service & Repair** ..... 7

**Troubleshooting** ..... 14

**Drawings** ..... 19

**Mechanical Procedures** ..... 23

**Maintenance** ..... 31

## **ALBANY DOOR SYSTEMS CONTACT INFORMATION**

**Port Washington, WI**

1080 Maritime Drive, Port Washington, WI 53074

Phone: 262-268-9885 Fax: 262-268-9895

Technical Support: 262-268-9885

service@albanydoors.com

www.albanydoors.com / support@albint.com

**Lawrenceville, GA**

975 A Old Norcross Road, Lawrenceville, GA 30046

Phone: 800-252-2691 Fax: 262-268-9895

Technical Support: 262-268-9885

service@albanydoors.com

www.albanydoors.com / support@albanydoors.com

## INTRODUCTION

The contents of this manual are designed to help you operate and maintain Albany UltraTough™ high speed doors. **DO NOT operate or perform maintenance on the high speed door unless you have read through the instructions in this manual.**



The safety alert symbol is used to identify safety information about hazards that can result in personal injury. A signal word (DANGER, WARNING, or CAUTION) is used with the safety alert symbol to indicate the likelihood and the potential severity of injury. In addition, a hazard symbol may be used to represent the type of hazard.



**DANGER** indicates a hazard that, if not avoided, will result in death or serious injury.



**WARNING** indicates a hazard that, if not avoided, could result in death or serious injury.



**CAUTION** indicates a hazard that, if not avoided, might result in minor or moderate injury.



**CAUTION**, when used without the alert symbol, indicates a situation that could result in damage to the door.



**NOTICE** is used to inform you of a method, reference, or procedure that could assist with specific operations or procedures.

Other symbols that may be used in this manual are:



Lock Out / Tag Out



Crushing



Fire



Shock



Read Manual

---

## Product description

### Function and design of this door

The model Re-Coil-Away is a vertically opening door.

### Principle

The door assembly consists of left and right side frames and a header assembly. The header assembly contains the curtain and the drive system already attached. The bottom beam is already attached to the curtain. Door comes standard with a balance system and also available as an unbalanced option.

The Re-Coil-Away door rolls the curtain material directly on and off a barrel assembly. The edges of this curtain are contained within the side frames via a patented windlok system while the curtain is being rolled or unrolled off the barrel. These side frames guide the curtain also and provide a seal.

The bottom beam, located on the bottom of the curtain, contains a continuously monitored electrical safety edge. Activation of this device will stop the door and cause the door to reverse to a fully open position. The door also has a reversing photocell attached to the side frames of the door.

### Control Unit

The Re-Coil-Away may be driven with the control unit ACS-50, UltraSmart or PLC with contactors. The maximum opening speed depends on the size of the door and type of motor. See applicable control panel manual for door operation and electrical troubleshooting guides.

### Electric safety features

The Re-Coil-Away door utilizes a minimum of two safety features. This is comprised of safety photocells and electric reversing edge.

### Additional Safety systems

Depending on the kind of application it may be useful to have additional sensors as safety features. This is especially true for a door with a high volume of human traffic or with low sized doors with a height under 10 feet (3m).

Albany Door Systems offers a variety of safety systems for high-speed doors. Some examples could be any of the following: Light beam barriers, motion detectors, induction loops. For any other electrical requirement contact us at the factory.

### Drives

The Re-Coil-Away is operated with an electrical drive. Drive side is chosen by the end-user. The drive system could be either 1-speed or 2-speed depending on door size and customer requirements. The drive systems come in 3 different operating voltages: 208-240VAC, 440-480VAC, and 550-600VAC.

## Technical Data

Door principle:	Roll door
Running direction:	Vertical
Application:	External door (also applicable as interior door)
Maximum Sizes:	24' wide x 27' high
Maximum opening speed:	48 inches per second @ 8 feet (Depends on door size)
Maximum Closing speed:	24 inches per second @ 8 feet (Depends on door size)
Fitting position:	Interior or external mounting
Drive:	Electrical
Electric Power:	240VAC, 440VAC, 575VAC
Maximum Horse power:	2.7 H.P.
Control unit options:	ACS-50 / UltraSmart / PLC
Control voltage	24VDC
Motor protection category:	IP54 - NEMA 12
Door frame:	Painted Steel
Curtain:	SBR, EPDM
Door dimensions and fitting space	See enclosed technical drawing
Fixing points:	See fixing drawings

## NOTICE

Technical changes resulting of product maintenance are subject to alterations

## Safety advice

### Area of application

The Albany Re-Coil-Away is used for the closing of door openings preferably in industrial buildings that are highly used area of automobiles or heavy equipment.

It is a flexible exterior door with resistance to wind and weather conditions. It opens with a speed that is especially suitable for heavy traffic throughways. It ensures a smooth transport flow and reduces collisions. The Albany Re-Coil-Away door may also be applied to interior areas.

## Responsibilities of the operator

The Albany Re-Coil-Away door is designed and manufactured under consideration of safety technical specifications. This meets the highest standard of safety.

However, this safety can only be reached in operational practice if all necessary measures are met. It is the duty of the operator of such door system to ensure all these measures and check it's status. Please read the operation manual carefully and keep it in a safe place.

The operator of the door is held to ensure especially that:

- Installation, first operation, inspection, servicing, repair work and dismantling are only done by personnel that have been trained by the manufacturer.
- Only to be operated by personnel that have been sufficiently assigned and authorized to operate this door system.
- The door is only used according to the determined application (see above).
- The door must be only operated in a functional perfect state and especially the safety features must be checked for function in regular intervals.
- The operation manual should be kept at the site of the fitted door system in readable condition.
- All safety and warning labels should not be removed from the machine and should also be kept readable.
- Do not drive through the door opening unless door is completely open.
- In power loss condition the electrical drive for the door curtain can be unlocked using the disengagement chains and then the curtain hand chained upwards. When the disengage lever has been engaged the control system has been disable.
- During operation of the door do not stick your hands in the side frames. Keep hands and feet clear of the door at all times. Stay clear of the door while it is operating.
- Human traffic should be avoided within the working area of the door. Existing side doors for human traffic should be used instead.
- Do not run through the door opening. Go upright and with normal pace.
- Keep the working vicinity and the opening of the door in clear of obstructions. Maintain a clear door opening at all times. Obstructions may cause accidents.
- Do not climb up the door
- For all kind of work on the door the main switch (main disconnect) must be set to the OFF position and locked out to prevent power from being reset.
- When damage occurs to the door (mechanically or electrically) turn off operational power immediately. This is especially true if you have damage of the curtain or drive system.
- **USE EXTREME CAUTION** when it is necessary to service the control panel or the auxiliary control box while it is energized. The door must only be operated with the correct voltage and frequency.
- Use only the auxiliaries and devices authorized by the manufacturer of the door.
- The STOP Button on the front of the panel is a momentary stop **ONLY** with the ACS-50 and UltraSmart panels. The door will only stop for that cycle; **motion detectors, floor loops, or any activating device can activate the door!** To ensure that the door keeps from being activated, use the rotary disconnect on the front of the panel.
- **DO NOT EVER USE PETROLUM BASED PRODUCTS ON THE CURTAIN, IF DONE THIS VOIDS ALL WARRANTY ON THE CURTAIN MATERIAL.**

Pay attention to the general safety advises mentioned under the core point SAFETY but also the special safety advises mentioned in the other chapters of the operation manual.

## Service & Repair

### Customer Service

In case of door maintenance/malfunions or repair work, please contact the supplier or the manufacturer.

Address of Customer Services Department

**1080 Maritime Drive, Port Washington, WI 53074**

**Phone: 262-268-9885 Fax: 262-268-9895**

**Technical Support: 262-268-9885**

**service@albanydoors.com**

**www.albanydoors.com / support@albint.com**

### Inspection and maintenance

Before starting work on the door, the power must be disconnected by switching off the main power disconnect and then locked out. Then the control box needs to be checked to verify that voltage has been eliminated from the panel. Please observe that all used ladders, scaffoldings, or such, correspond with the valid safety regulations.

The working area must be blocked for both vehicle and foot traffic. Lubrication oil on the floor, tools and other material should be removed from the floor when work has been finished.

The necessary maintenance inspections, check-up and time intervals are listed in the Inspection section.

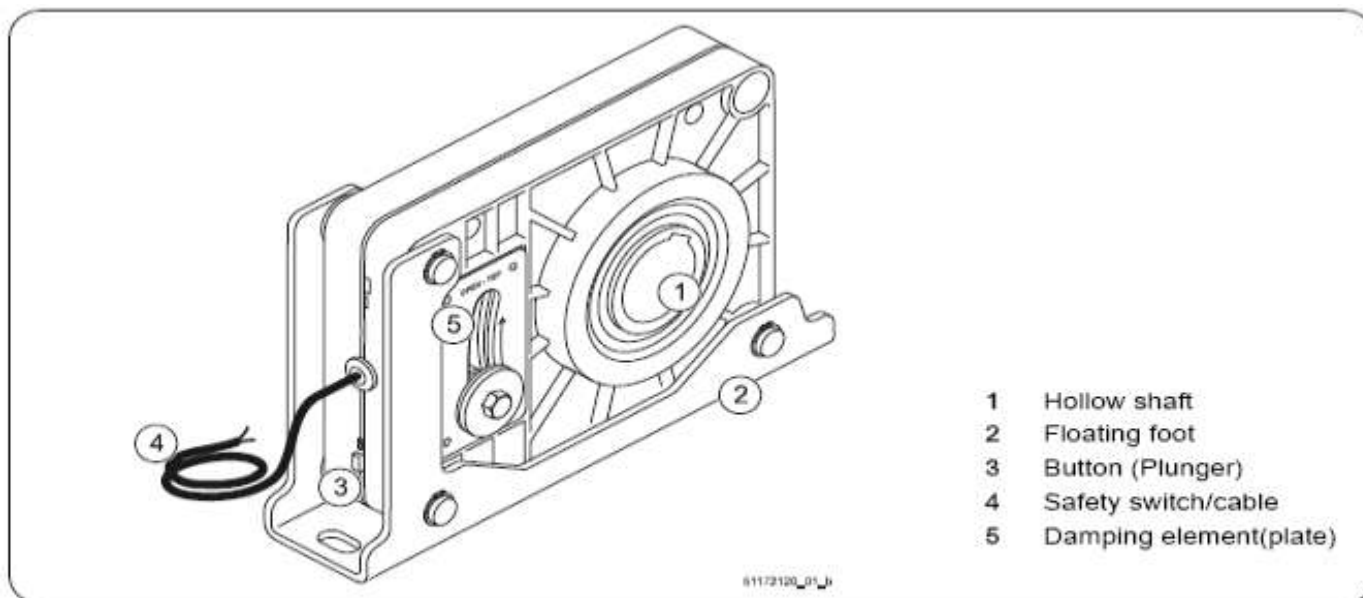
### Cleaning and maintenance of the door curtain

- Do not ever use any petroleum-based products on the curtain.
- Clean curtain with a citrus based cleaner or a cleaner specifically designed for cleaning SBR / EPDM rubber materials. All cleaners are to be petroleum free and non-caustic.
- Dust may be removed with a cloth. Harder dirt may be removed with water. Dirt, grease, or oil on metal may be removed with a citrus cleaner.

# Inertia Brake GFA FG220-15-60

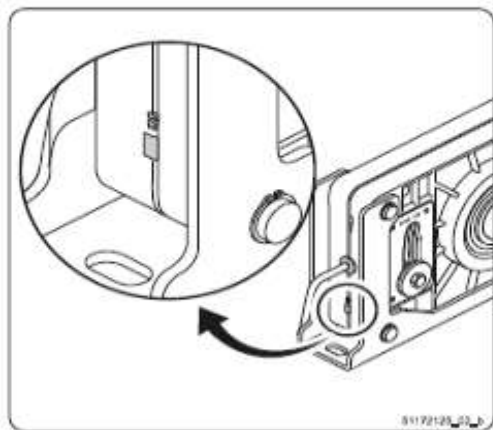
## ⚠ WARNING

Lock-Out Tag-out all electrical power supplied to the door before making any electrical installations or connections. Also Lock-out Tag-out any equipment near the installation site if that equipment may be inadvertently operated into the area used to assemble and install the door. Failure to properly deenergize electrical circuits and disable equipment during installation and/or maintenance could result in death or serious injury.

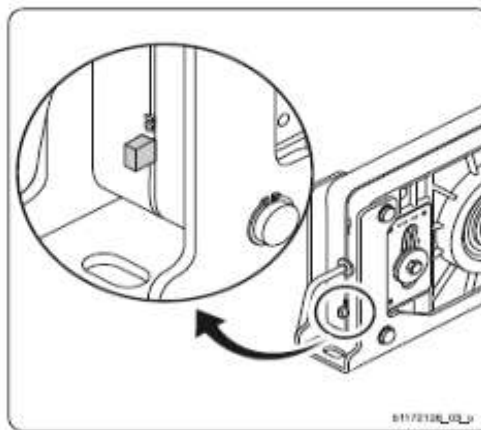


By worn of the gear or chain break the door will fall down unintended. The door shaft speed exceeds up to the activating speed of the safety brake. After actuation „fall energy“ will be absorbed and the door Stops. In the stopping position the safety electrical switch will be contacted continuously and interrupts the electrical safety circuit of the drive unit. The door becomes out of order. The actuation will be optically indicated by the outstanding red button.

Service position:



Operating position:



When the safety brake has operated (catching the door) it must be inspected and eventually repaired or replaced, only by qualified and trained craftsmen or engineers.

## Activation - Repair - Replacement

When the safety brake has operated (catching the door) it must be inspected and eventually repaired or replaced only by qualified and trained craftsmen or engineers.

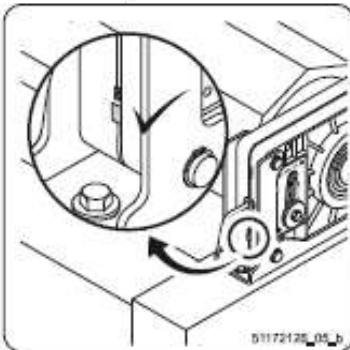
In the stopping position a safety switch will be contacted continuously and interrupts the electrical safety circuit of the drive unit. The door becomes out of order. The actuation will be optically indicated by the outstanding red button.



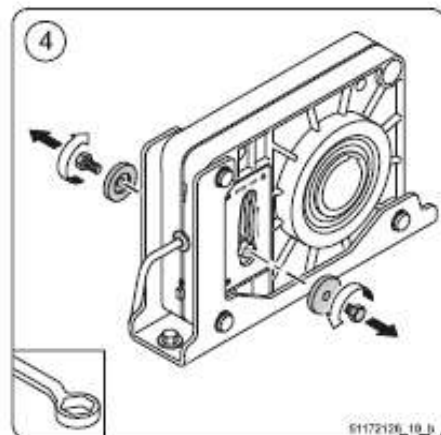
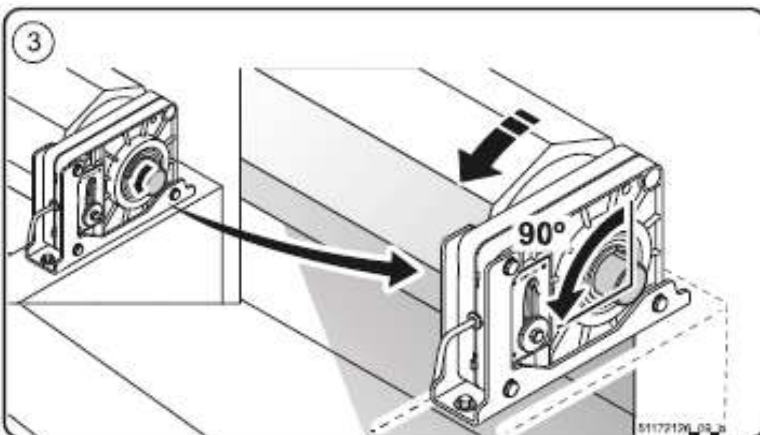
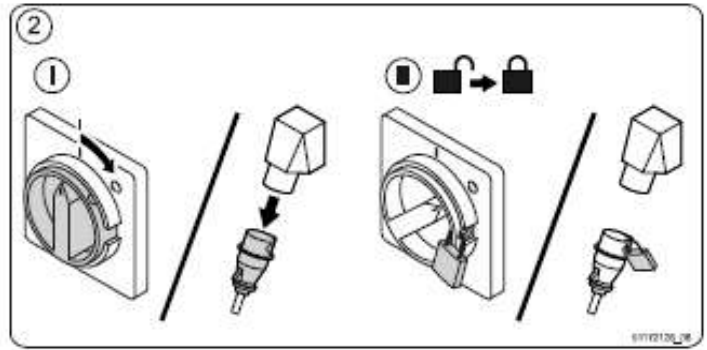
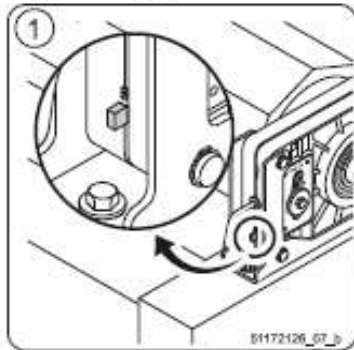
### Danger!

- Disconnect the drive unit from electrical power and protect against accidental operation.
- Protect the door against falling.
- Repair the cause of failure (drive mechanism, brake, chain)

Service position:



Operating position:



Actuated – Situation - A

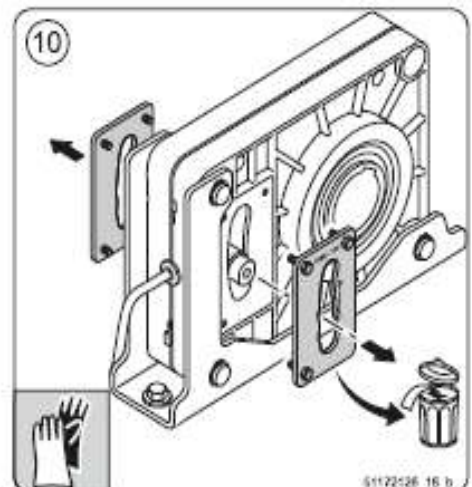
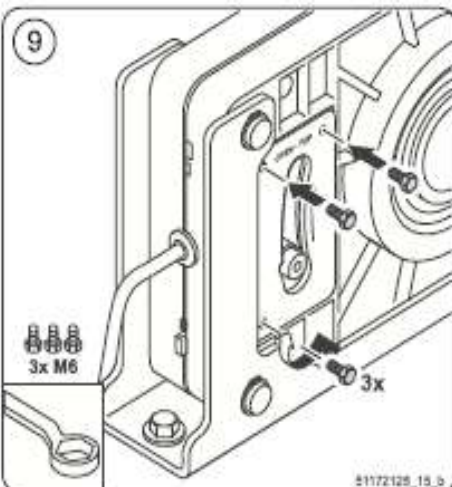
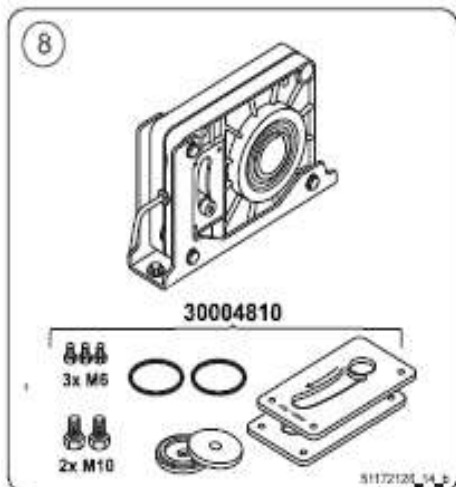
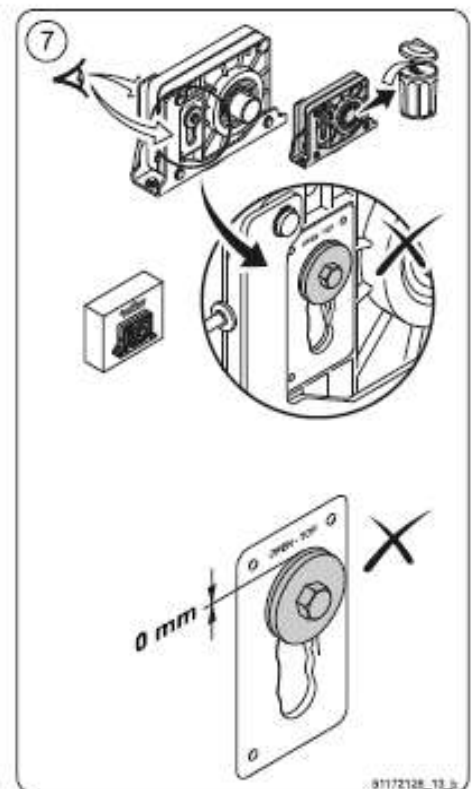
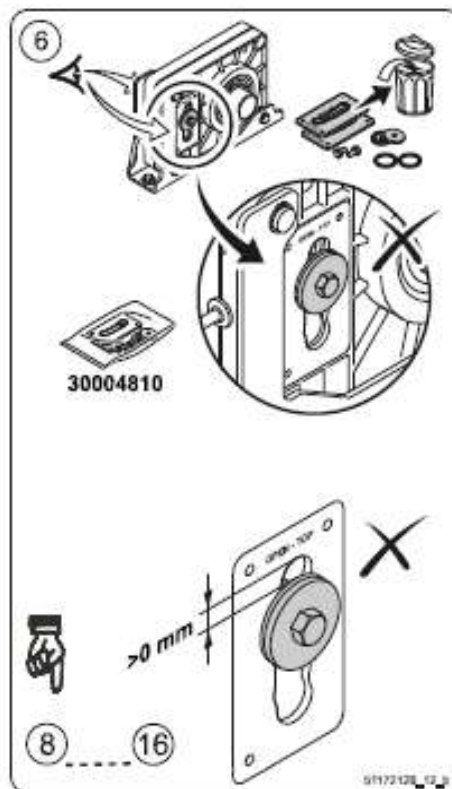
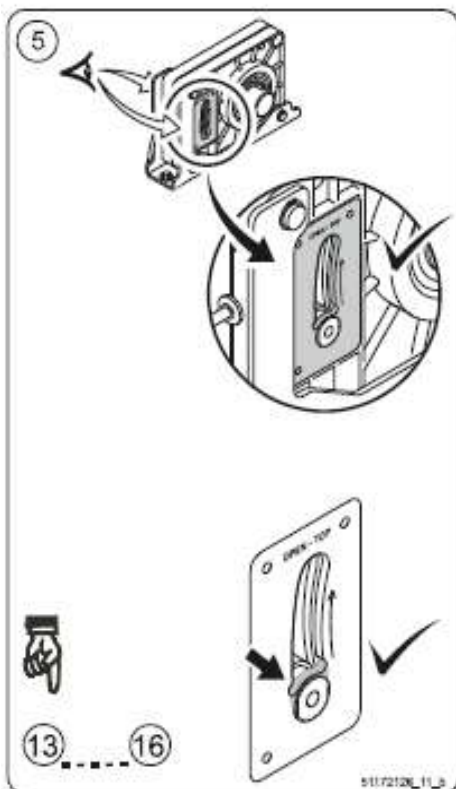
- Red button comes out
- Damping elements undamaged
- Safety brake OK
- Next ⑬....⑯

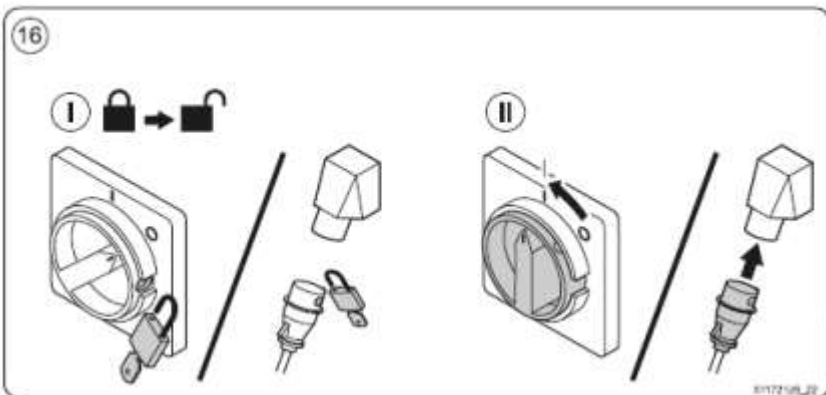
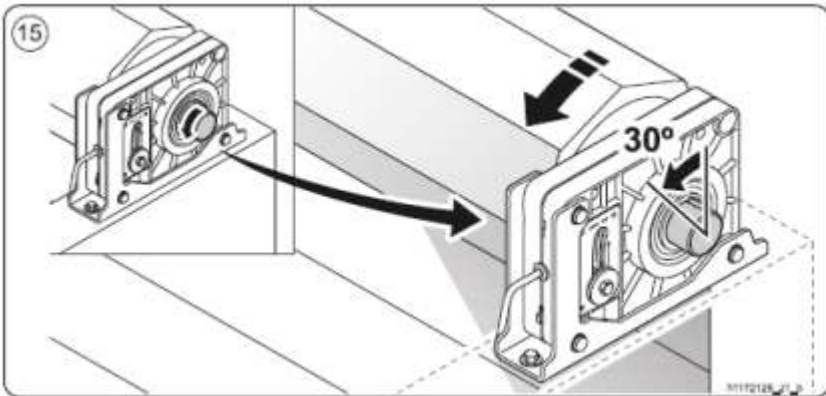
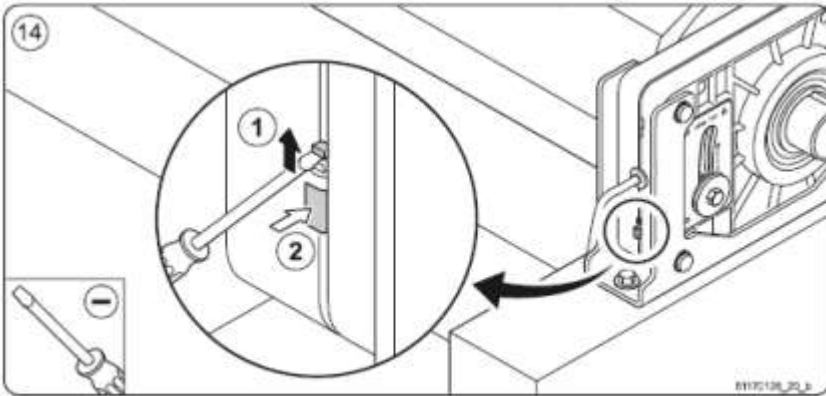
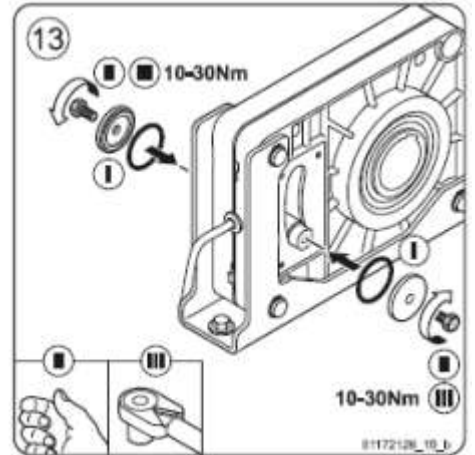
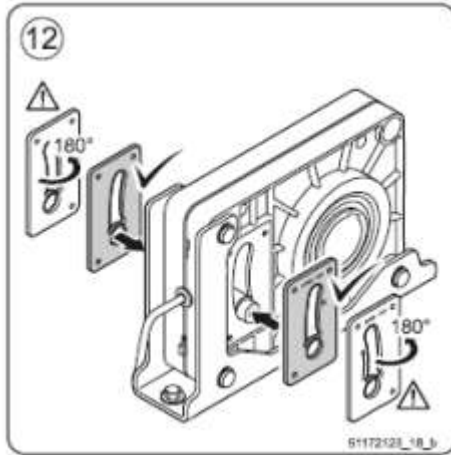
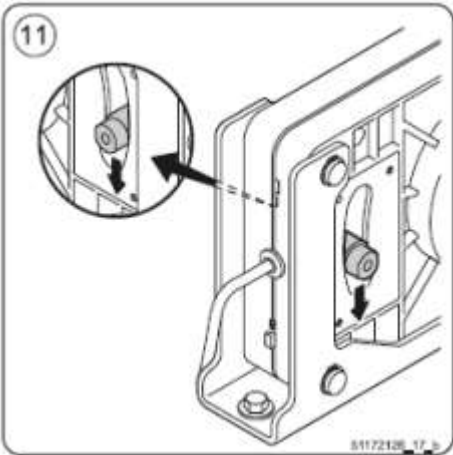
Actuated – Situation - B

- Red button comes out
- Damping elements damaged
- Replace the damping elements
- Next ⑧...⑯

Actuated – Situation - C

- Red button comes out
- Damping elements overstrained
- Replace the safety brake because of damage







**Attention!**

- All regulations relating maintenance, inspection, application and also valid directions and normative must be observed.

This safety brake is maintenance-free

Mounting position

- ! Advice (OBEN = TOP respectively AB = DOWN marking)

Electrical switch

- Proper condition of cable and connection must be inspected

Mechanical parts

- Proper condition and tightness of fixing elements and bolts must be inspected.

Spare parts



**Attention!**

- Only original replacement parts and accessories must be used.

We do not accept liability or providing any guarantee against damage caused by using non original replacement parts and accessories.

**Disposal**

- The disposal of packing material and replaced safety brake unit must follow valid regulations and laws.

The picture shows all the parts that are included in the dampening plate repair kit.

Situation B described in the previous pages would be the only time that a repair kit would be needed.



6622T0023 Dampening plate repair kit

## Troubleshooting

### How to Wedge a Curtain

#### **Why would a curtain need a wedge?**

A wedge is used to correct uneven curtain build, which can be evidenced by the following symptoms:

- (a) Bottom bar tracks to either right or left thereby causing it to jam against the guide,
- (b) Bottom bar becomes out-of-level when door is in the open position,
- (c) Curtain tends to 'cone' in one direction on the barrel, as the door is rolling up.

#### **What is a wedge?**

A wedge is a piece of waste rubber (can be as large as 6" square by as much as 1/2" thickness), which is strategically placed on the drive barrel between the curtain and the barrel. It is secured with a self-tapping screw(s).

#### **How to determine where to fasten a wedge.**

It is normal for a curtain to 'float' slightly from side to side as the door rolls up and down. Wedging is required only when there is a severe tracking problem such as listed above.

The placement of a wedge can be determined in several ways. For example, if the bottom bar were tracking to the left as the door is opening, then the wedge would be fastened on the right end of the barrel. The wedge would then make the curtain roll-up faster on the right side, thus making the bottom bar track evenly between the guides. Should the door be tracking to the right, and then obviously the wedge should be fastened to the left end of the barrel.

It is important to identify whether a door requires a wedge or if it has been installed out-of-level. For instance, if a door rolls down with the bottom bar continually tracking to one side, eventually jamming near the floor, yet the curtain does not appear to 'cone', then the door is most likely out-of-level. To remedy the problem, it may be necessary to raise one of the end plates (which have slotted holes) to level the door.

## Removal and Re-installation of curtain in guides

1. Unbolt the hinged front guide plates of both the left and right guides. Swing the front guide plates open and place them to the side.
1. In the event that only the upper portion is hinged, raise the curtain and bottom bar until the bottom bar front angle is just below the open hinged portion. Then, lift the curtain one end at a time, out of the guides and set it outside the front guide plates.
2. Lower the curtain slowly and make sure that it does not catch on the guides. To re-install the curtain, follow the above steps in reverse order. Be sure to close and bolt the front guide plates prior to putting the door back into operation. Make sure that the guide gap is an even 1/2" from top to bottom.

## Removal and Re-installation of bottom bar

1. With the curtain and bottom bar supported on a flat surface, remove the bolts which secure the bottom bar to the curtain.
2. Slip the curtain out of the bottom bar. To re-install the curtain back into the bottom bar, follow the above steps in reverse order.

*If the bottom bar is equipped with an electric reversing edge, be sure to unplug the connector when removing the bottom bar. In addition, take extreme care not to damage the electric reversing edge fabric. A puncture would allow moisture to penetrate it, thus causing premature failure of the reversing edge.*

## Repairs to rubber curtain – rips or perforations

In order to work on the ripped or perforated area, the curtain must be taken out of the guides and lowered to the floor. Then, either work on an area supported by the floor or alternatively, a solid, level surface provided by a heavy table, for example. Refer to Figure 31 and 32 for positioning of the curtain prior to repairing it.

1. Using a utility knife, set it to a depth that will penetrate the rubber down to the nylon cord centre of the curtain and cut a rectangular or square section approximately 2" wider than the sides of the rip or perforation. Be careful not to cut the nylon cord itself (see Figure 31).
2. Using a screwdriver and pliers and starting at one corner of the cut, peel the surface from the nylon cord centre within the perimeter of the cut.
3. Using coarse sandpaper or a wire brush, remove loose rubber particles from the nylon cord centre. However, it is not necessary to have the fabric 100% bare.
4. Flip the curtain over to the other side of the rip or perforation and repeat Step 1 through Step 3.
5. From the 1/8" thick piece of repair rubber, cut some pieces to inlay into the prepared areas. Using a grinder with a sanding disc or a wire brush, roughen-up the inlay surfaces for bonding.
6. Mix the adhesive as per the manufacturer's instructions and apply a liberal coating to the nylon cord fabric and the rough surfaces of the inlay rubber segments. Allow pieces to dry to the touch (about 15 to 20 minutes) and apply a second coating. Allow to set until tacky. Place the inlay segments into position and, using a rubber or rawhide mallet and a steel buckler, impact the entire area of the patch repeatedly. A high degree of impact ensures proper adhesion. Clamping is not acceptable. Allow the cement to cure thoroughly (1-1/2 to 2 hours) before moving the curtain.
7. Finally, raise the curtain to an open position, re-insert it into the guides, close and re-bolt the guides, and resume normal operation.

REPAIRS TO RUBBER CURTAIN

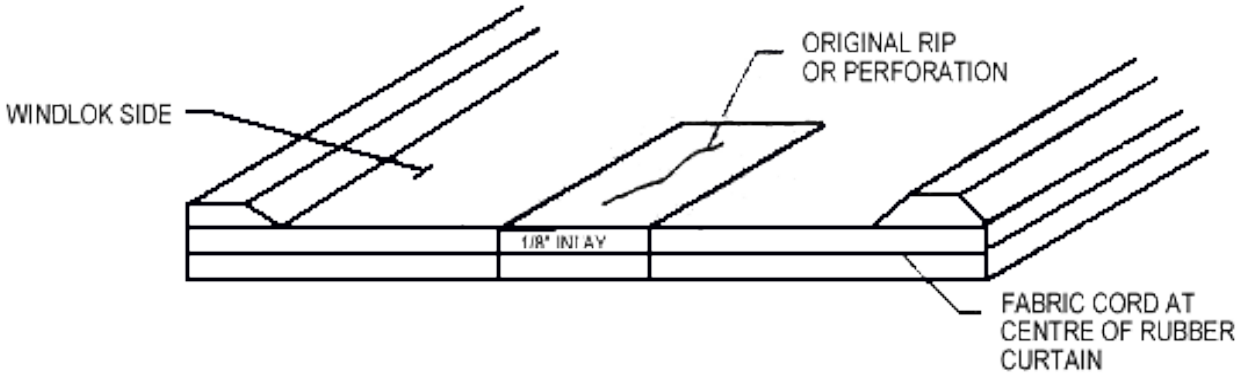
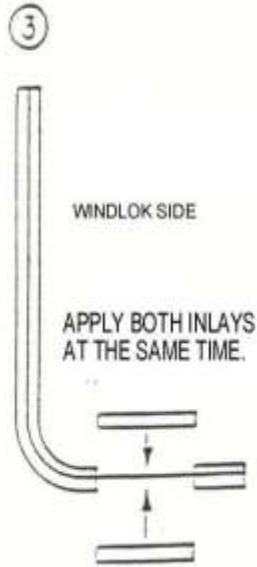


FIGURE 5-2



## Maintenance Schedule

Due to the unique design features of your new "RE-COIL-AWAY", the need for continual maintenance normally associated with conventional door systems (i.e.: guide rollers, hinges, door track, etc.) is virtually eliminated. The limited maintenance procedures listed below, when completed as indicated, will assure many years of trouble-free operation.

MAINTENANCE PROCEDURE	INITIAL 1,500 CY- CLES	EVERY 25,000 CYCLES OR 3 MONTHS	EVERY 100,000 CYCLES OR 12 MONTHS
<b>LUBRICATE:</b> Flange Bearing (4)	NO	NO	Grease, 1 shot
Drive Chain	NO	OIL	OIL
<b>ADJUSTMENTS:</b> (check & adjust if neces- sary)			
Drive Chain Tension	YES	YES	YES
Guides, bottom bar & header assembly for rust or damage	YES	YES	YES
Guide Opening 1/2"	NO	YES	YES
All Fasteners (check for tightness)	YES	YES	YES
Limit Settings	YES	YES	YES
Reversing Edge (check for proper op- eration and any signs of damage)	YES	EVERY MONTH	YES

## Gearbox

The gear construction is maintenance-free and has lifetime lubrication. (The output shaft should be kept rust free.)

## Torque Specifications

The table below list the type of bolt, its use, and what its torque setting is

<b>Size</b>	<b>Type</b>	<b>Location</b>	<b>Torque (ft-lb):</b>
5/8-11 x 2"	Hex head bolt, Grade 8	Drive barrel bearing to end plate	212
5/8-11 x 1-1/2"	Hex head bolt, Grade 8	End plate to side frame	212
5/8-11 x 1-1/2"	Hex head bolt, Grade 8	End plate to inertia brake bracket	212
5/8-11 x 1-1/2"	Hex head bolt, Grade 8	End plate to spring mounting brackets	212
1/2-13 x 2"	Hex head bolt, Grade 8	Idler barrel bearing to end plate	106
1/2-13 x 1-1/2"	Hex head bolt, Grade 8	Header assembly to truss/ spreader bars	106
1/2-13 x 1-1/2"	Hex head bolt, Grade 8	Inertia brake bracket to inertia brake	106
M16x2.0x40mm	T-bolt	Operator to T-slot rail (Large operator)	59
M12x1.75x30mm	T-bolt	Operator to T-slot rail (Small operator)	89
3/8-16 x 1-1/2"	Hex head bolt, Grade 5	Side frame angle to front cover	31
3/8-16 x 1"	Socket head cap screw, grade 5	Bottom beam to aluminum extrusion	31
3/8-16 x 1-1/4"	Button head screw, Grade 5	Bottom beam angle thru fabric to flat bar	31
5/16-18 x 1-1/2"	Self tapping screw	Curtain to drum tube	15
1/4-20 x 1-1/4"	Hex head bolt, Grade 5	Break away bar on bottom beam	8





# M&I Re-Coil-Away Architectural Over 12' x 12' (Unbalanced)

**NOTE:**  
A. CONTROL PANEL DIMENSIONS,  
DIGITAL GATEWAY = 14.75" W X 12.5" H X 8" DEEP  
ULTRA SMART = 15" W X 10" H X 8" DEEP

= RECOMMENDED FOR MAINTENANCE,  
REQUIRED FOR COVERS

**DETAIL "B"**

### SPECIFICATIONS & OPTIONS

OPENING SIZE	W=	H=
MFG. DOOR SIZE	W=	H=
PRIMARY VOLTAGE	208-240	440-480
DRIVE SIDE - (RH / LH)		575-600
F.R. COVERS (YES / NO)		OPERATOR SPEED (1/2 )
CONTROL PANEL (DIGITAL GATEWAY / ULTRA SMART)		SPRINGS
WINDBAR (FRONT / REAR / NO)		NO
WINDOWS (QTY.) DETERMINED BY MFG. DOOR WIDTH		
FABRIC (BLACK SBR / GRAY EPDM / BLUE EPDM)		
DOOR ACTUATORS (QUANTITY)	PUSHBUTTON	<901>
	PULL SWITCH	<911>
	FLOOR LOOP	<930>
	TRUCK GUARD	
	PHOTOCELLS	THRU BEAM <940> REFLECTIVE <941>
	MOTION DETECTOR	<950>
COMMENTS:	RADIO RECEIVER	<925>

**TOP VIEW**

**FRONT VIEW**

FOR S.F. COVER CLEARANCES SEE DETAIL "B"

**RIGHT VIEW**

**LEFT VIEW**

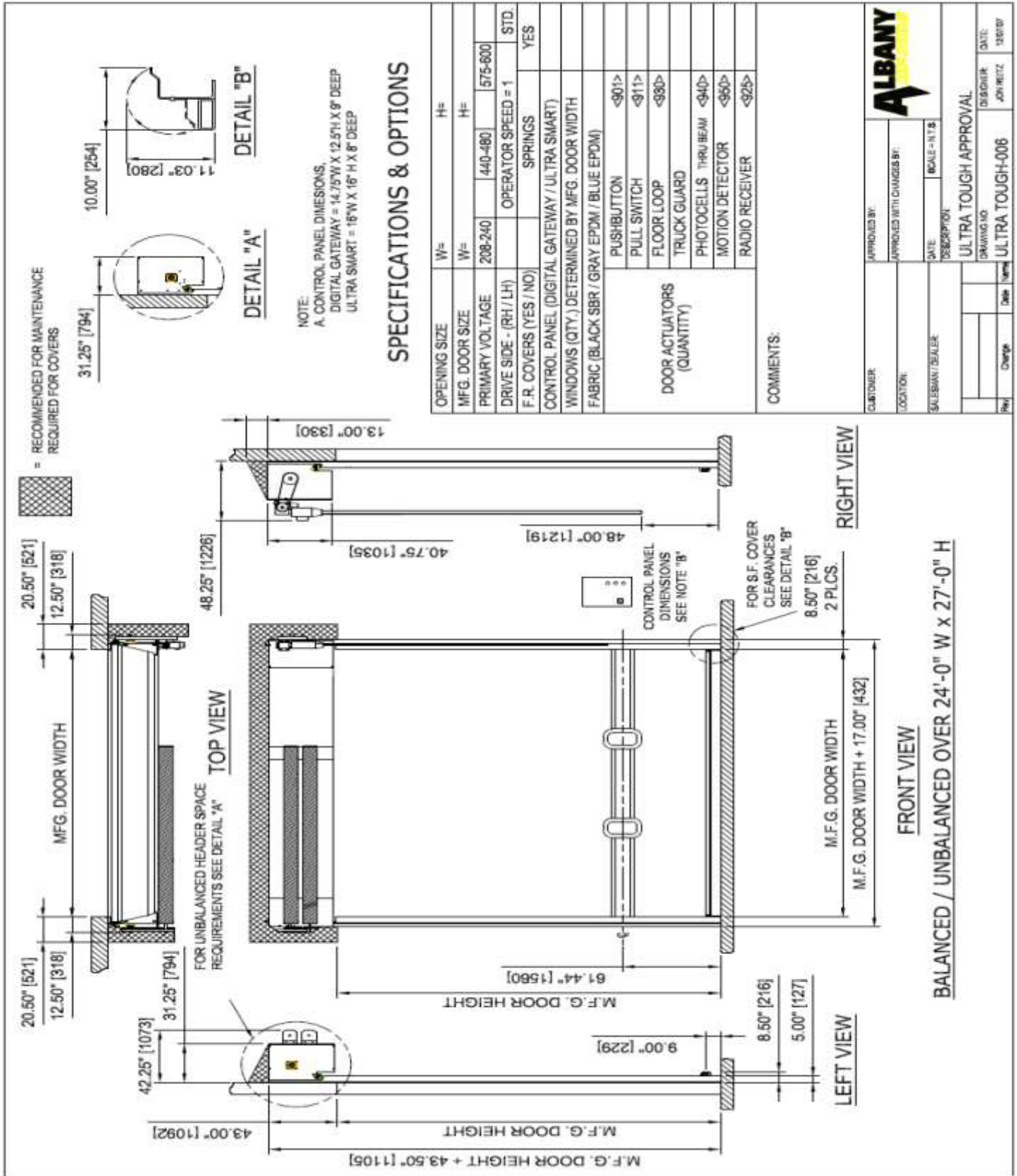
**SPRINGLESS OVER 12'-0" X 12'-0"**  
**UP TO 391 SQ. FT.**

**(SPEED ZONE #10, #11, #13, AND #14)**

CUSTOMER:	APPROVED BY:	<b>ALBANY</b>
LOCATION:	APPROVED WITH CHANGES BY:	
SALESMAN / DEALER:	DATE:	SCALE = N.T.S.
Rev. Change	Date	Rev.
ULTRA SMART		DESIGNER
TRUCK GUARD COVING		J. RETZ
ULTRA TOUGH APPROVAL		DATE
ULTRA TOUGH-001		42007



# M&I Re-Coil-Away XL Architectural Over 24' x 27'



## Albany Re-Coil-Away Door Mechanical Procedures

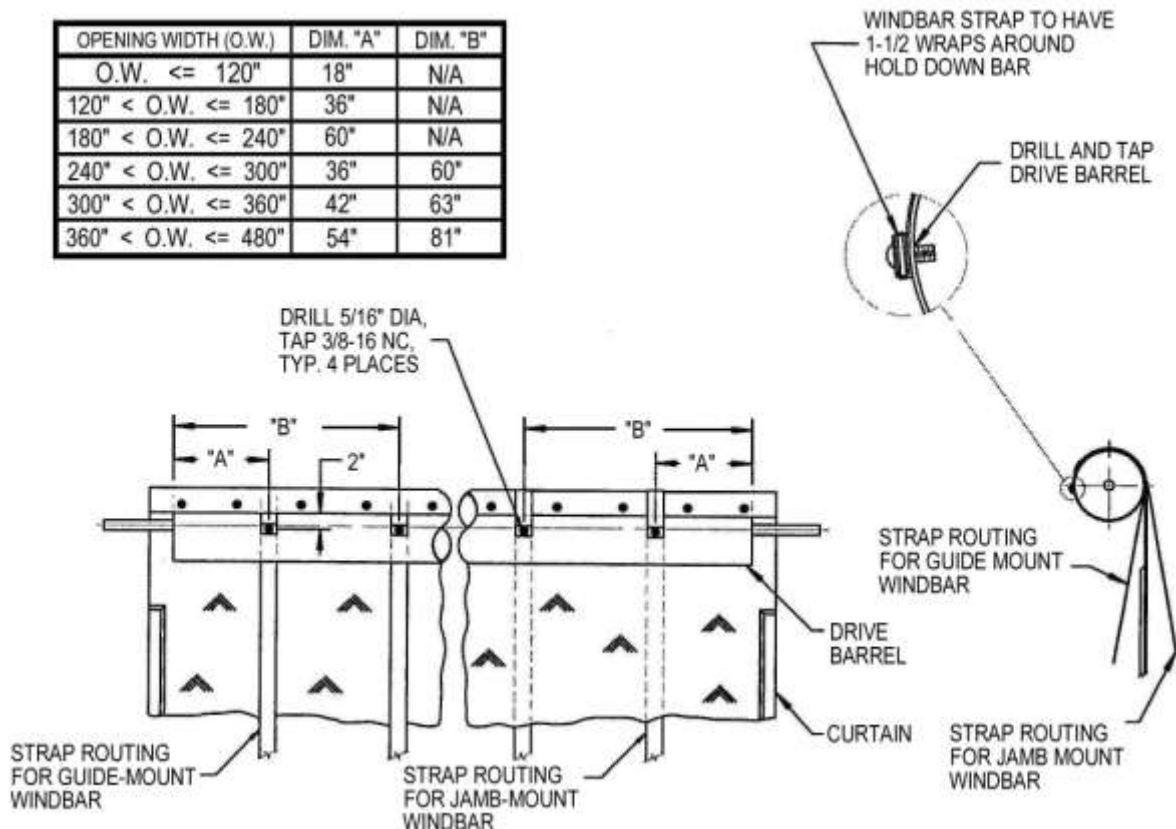
### TRAVELLING WINDBAR ASSEMBLY

*This is an optional accessory item which may not be applicable to model ordered.*

- Step 1 Drive Barrel Kit Installation  
 Step 2 Instructions for Guide-Mounted Windbar Assembly  
 Instructions for Jamb-Mounted Windbar Assembly  
 Step 3 4" or 4-1/2" Windbar Tube Installation  
 6-5/8" or 8-5/8" Windbar Tube Installation  
 Step 4 4" or 4-1/2" Windbar Tube Installation (cont'd)  
 6-5/8" or 8-5/8" Windbar Tube Installation (cont'd)

### Travelling Windbar Part Identification

### TRAVELLING WINDBAR ASSEMBLY – DRIVE BARREL



## **STEP 1**

**Note:** *If your door was supplied from the factory with a Traveling Windbar, proceed directly to Step 2.*

- With the door in the closed position, disconnect the power supply.
- Determine dimension “A” and “B” from the chart and measure the drive barrel to the required locations. From these locations, move to the closest center between curtain fasteners and mark the barrel 2” from the curtain edge.
- Drill a  $\text{AE } 5/16$ ” and tap  $3/8 - 16$  into the drive barrel at all locations.
- Wrap a hold-down bar with the windbar strap (1-1/2 wraps) and pierce a hole through the strap layers that aligns with the hole in the hold-down bar. Fasten the strap to the drive barrel with a  $3/8-16\text{NC} \times 5/8$ ” LG BHCS and flat washer. Repeat this procedure with the remaining windbar strap(s).
- If you are installing a jamb-mount windbar, route the straps over the top of the curtain and down between the curtain and the bulkhead. Check that the straps are not twisted.

If you are installing a guide-mount windbar, feed the strap between the drive barrel and the curtain. This procedure may require further closing of the door with the manual chain hoist to loosen the curtain tension.

## **STEP 2**

### **RE-COIL-AWAY WITH GUIDE-MOUNTED WINDBAR**

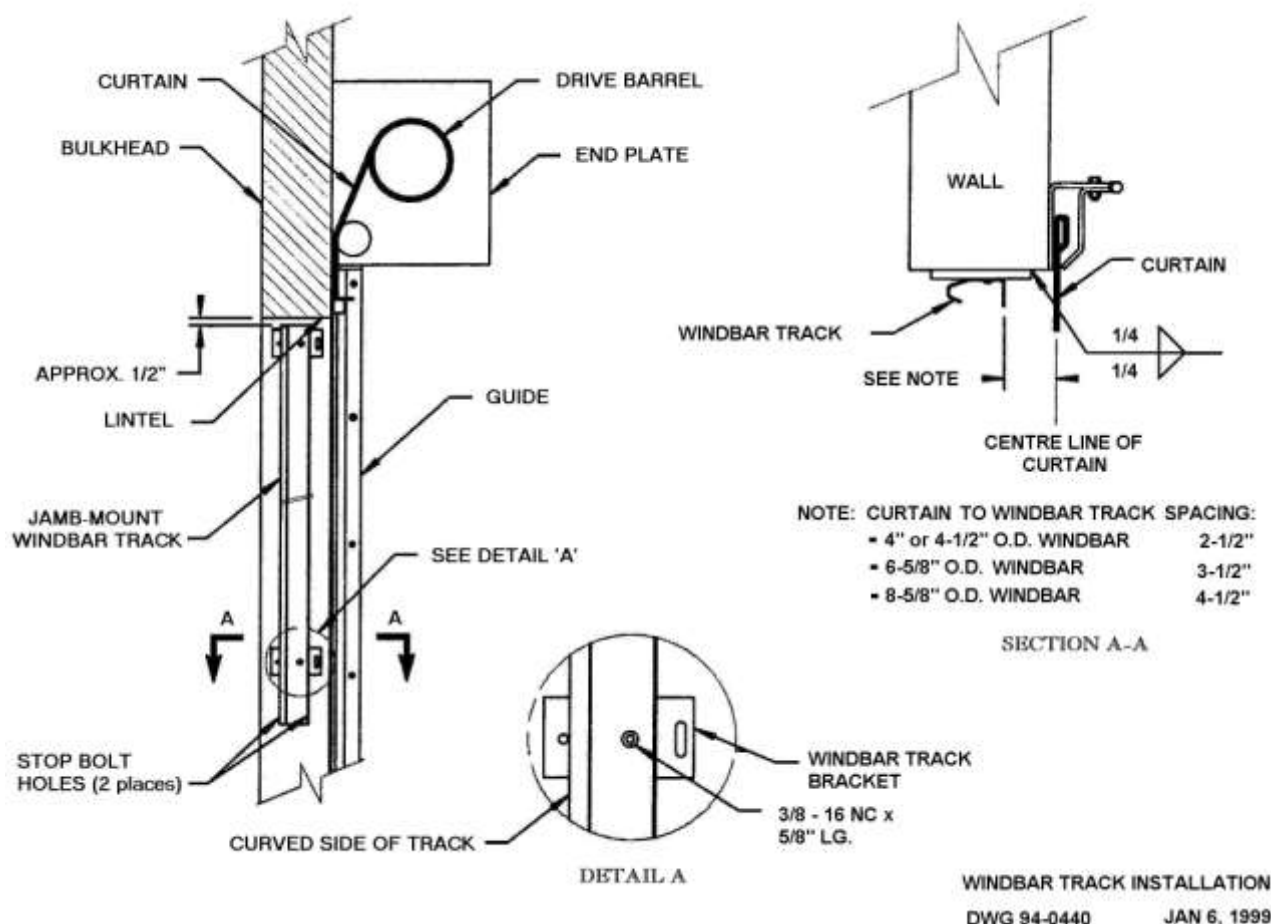
**Note:** *If your door was supplied from the factory with a guide-mount 6-5/8” or 8-5/8” Traveling Windbar, proceed directly to **STEP 3***

- If you are installing a 4” or a 4-1/2” O.D. windbar, fasten one (1) windbar track bracket to each hole provided in the windbar tracks. Orient the windbar track bracket with the slot protruding beyond the track edge opposite the curve. Fasten each bracket to the track using one (1)  $3/8-16\text{NC} \times 5/8$ ” LG BHCS per bracket.
- With the door in the open position, disconnect the power supply.
- There is a left-hand and right-hand windbar track. Determine the appropriate location for each track given, that the curved side is furthest from the curtain and the stop bolt holes are at the bottom.
- Determine the curtain to windbar track spacing required for your traveling windbar diameter (4”, 4-1/2”, 6-5/8” or 8-5/8” O.D.).
- If you are installing a 4” or a 4-1/2” O.D. windbar, unbolt the respective guide fasteners which align with the mounting brackets. Discard these fasteners and attach the windbar track using the  $3/8-16\text{NC} \times 1-1/2$ ” long HHCS and nuts provided.
- If you are installing a 6-5/8” or an 8-5/8” O.D. windbar, position the windbar track to the guides accordingly and weld each guide bracket to the outside of the guide back plate with two (2) 2” long fillet welds.

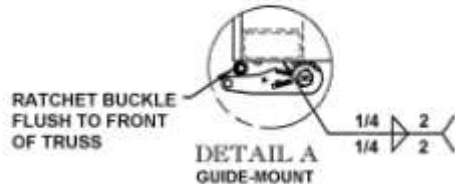
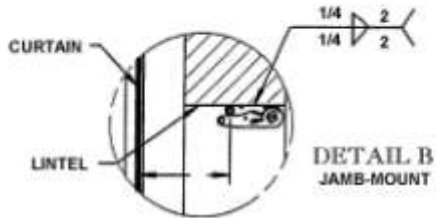
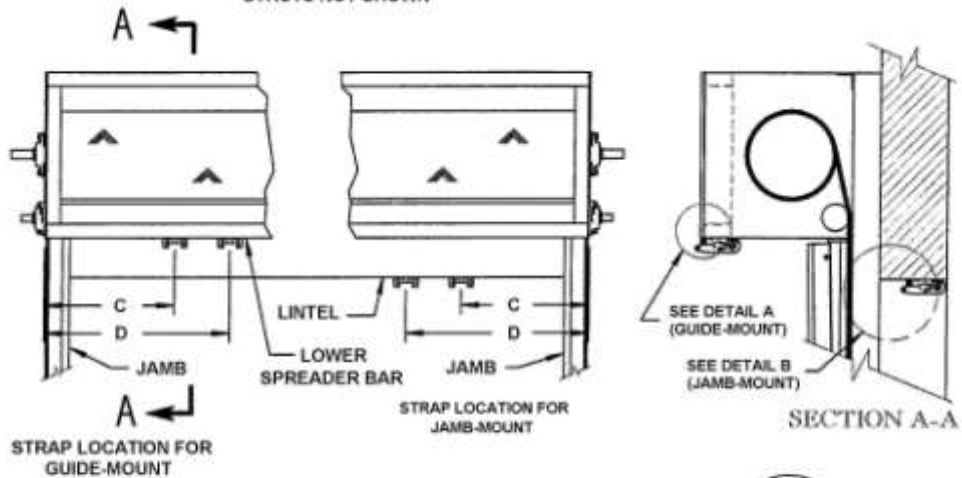
## TRAVELLING WINDBAR ASSEMBLY – WINDBAR TRACK (Jamb-Mount)

### STEP 2 – ALL JAMB-MOUNTED WINDBARS

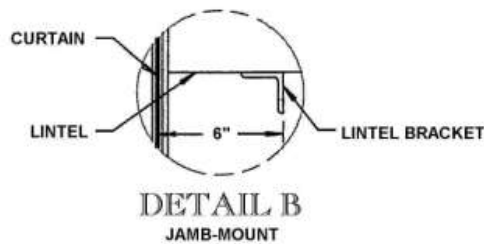
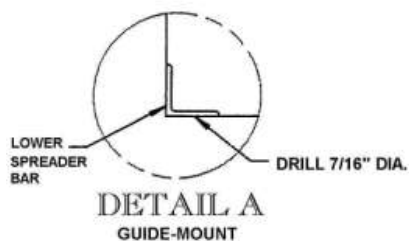
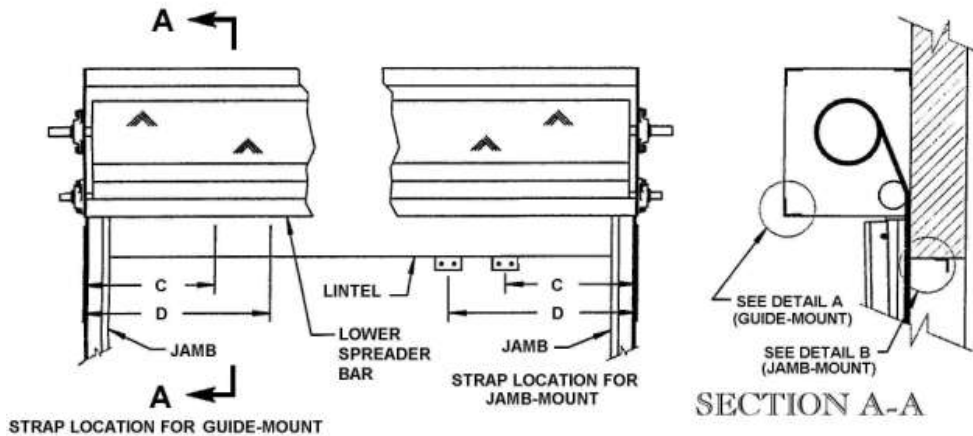
- Fasten one (1) windbar track bracket to each hole provided in the two (2) windbar tracks. Orient the windbar track bracket with the slot protruding beyond the track edge opposite the curve. Fasten the bracket to the track using one (1) 3/8 – 16 NC x 5/8" long BHCS per bracket.
- With the door in the open position, disconnect the power supply.
- There is a left-hand and right-hand windbar track. Determine the appropriate location for each track given, that the curved side is furthest from the curtain and the stop bolt holes are at the bottom.
- Determine the curtain to windbar track spacing required for your traveling windbar diameter (4", 4-1/2", 6-5/8" or 8-5/8" O.D.).
- Position the windbar track to the jamb accordingly and weld mounting bracket to the jamb or fasten thru the slot provided.



NOTE: FOR CLARITY, TRUSS  
STRUTS NOT SHOWN

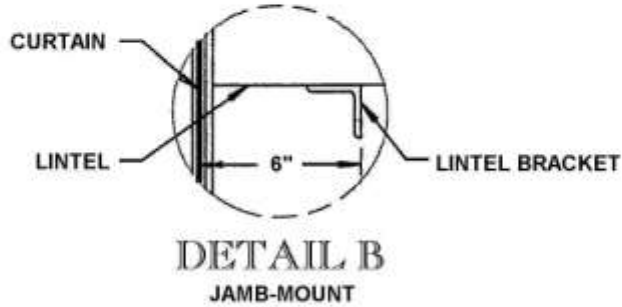
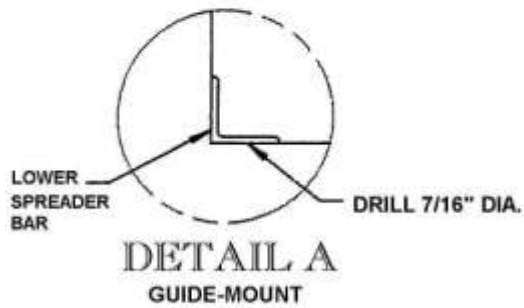
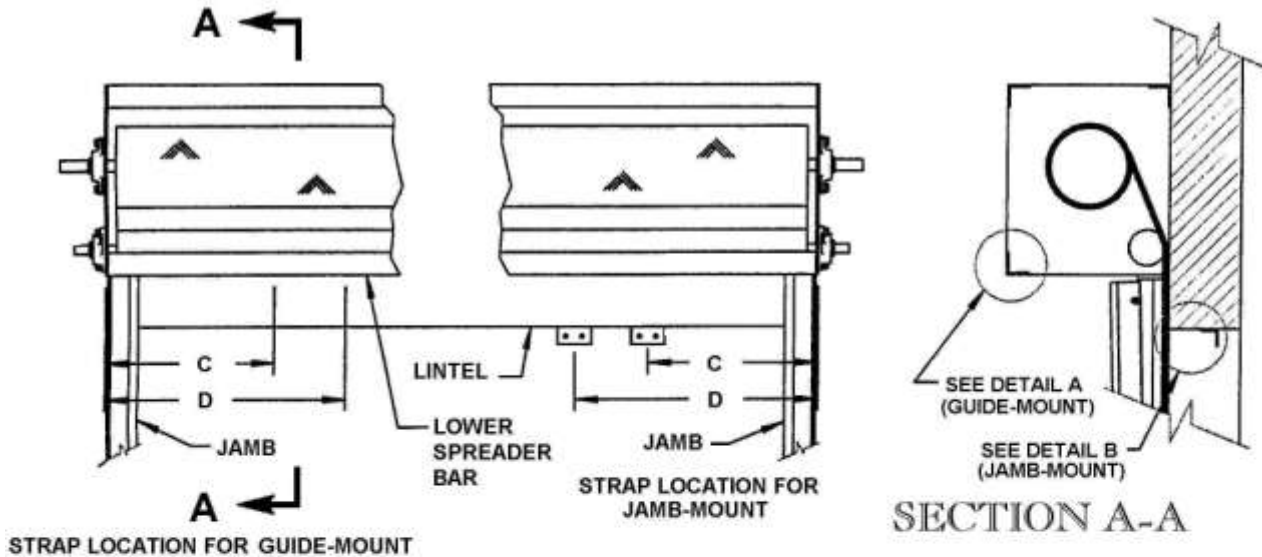


WINDBAR TUBE INSTALLATION  
DWG 96-0839 JAN 7, 1999



OPENING WIDTH (O.W.)	DISTANCE FROM OUTSIDE OF ENDPLATE TO STRAP LOCATION	
	DIMENSION 'C'	DIMENSION 'D'
O.W. <= 120"	9"	N/A
120" < O.W. <= 180"	18"	N/A
180" < O.W. <= 240"	36"	N/A
240" < O.W. <= 300"	18"	42"
300" < O.W. <= 360"	27"	48"

WINDBAR TUBE INSTALLATION  
DWG 94-0549 JAN 7, 1999



OPENING WIDTH (O.W.)	DISTANCE FROM OUTSIDE OF ENDPLATE TO STRAP LOCATION	
	DIMENSION 'C'	DIMENSION 'D'
O.W. <= 120"	9"	N/A
120" < O.W. <= 180"	18"	N/A
180" < O.W. <= 240"	36"	N/A
240" < O.W. <= 300"	18"	42"
300" < O.W. <= 360"	27"	48"

WINDBAR TUBE INSTALLATION  
DWG 94-0549 JAN 7, 1999

## TRAVELLING WINDBAR ASSEMBLY – WINDBAR TUBE INSTALLATION

### STEP 3 - FOR 4" OR 4-1/2" DIAMETER WINDBARS

- Determine dimensions "C" and "D" from the chart and mark the lintel (jamb mount) or the spreader bar (guide mount) at these dimensions from the outside of the end plates.
- If installing a jamb-mounted windbar, weld a lintel bracket at each mark on the lintel, 6" from the curtain. If installing a guide-mounted windbar, temporarily center and clamp a "windbar strap clamp" at the specified location on the lower front spreader bar to match drill the 5/16" diameter holes.

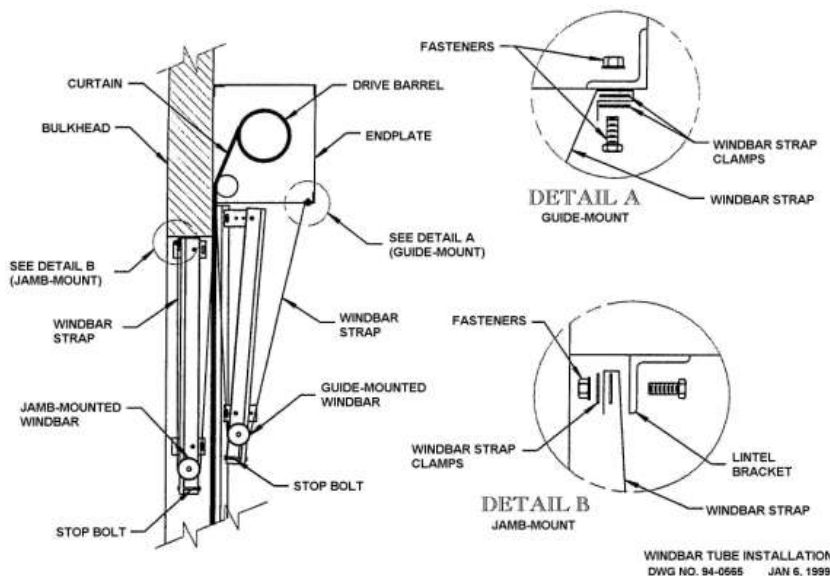
### TRAVELLING WINDBAR ASSEMBLY

### STEP 3 (FOR 6-5/8" OR 8-5/8" DIAMETER WINDBARS)

OPENING WIDTH (O.W.)	DISTANCE FROM OUTSIDE OF ENDPLATE TO STRAP LOCATION	
	DIM 'C'	DIM 'D'
O.W. <= 120"	9"	S/O
120" < O.W. <= 180"	18"	S/O
180" < O.W. <= 240"	36"	S/O
240" < O.W. <= 300"	18"	42"
300" < O.W. <= 360"	27"	48"
360" < O.W. <= 480"	33"	60"

- Determine dimensions "C" and "D" from the chart and mark the lintel (jamb-mount) or the truss (guide-mount) at these dimensions from the outside of the end plates.
- If installing a jamb-mounted windbar, weld a ratchet buckle at each mark on the lintel, 9" from the curtain (see Detail B).

If installing a guide-mounted windbar, weld a ratchet buckle at each mark on the bottom of the truss (see Detail A).



## TRAVELLING WINDBAR ASSEMBLY WINDBAR TUBE INSTALLATION

### **STEP 4 (FOR 6-5/8" OR 8-5/8" DIAMETER WINDBARS)**

With the door in the closed position, disconnect the power supply.

Insert a roller wheel into each end of the windbar tube.

Lift the windbar into the bottom of the tracks. Insert one stop bolt (3/8-16NC x 3-1/2" LG HHCS) into the holes at the bottom of each track and secure with 3/8-16NC hex nuts.

Route the windbar straps around the bottom of the windbar tube, then upward towards the lintel for jamb-mount or spring truss for guide-mount. Check that there are no twists in the straps.

Route the loose end of each windbar strap through the slot in the spool of individual ratchets on the lintel for jamb-mount or on the spring truss for guide-mount.

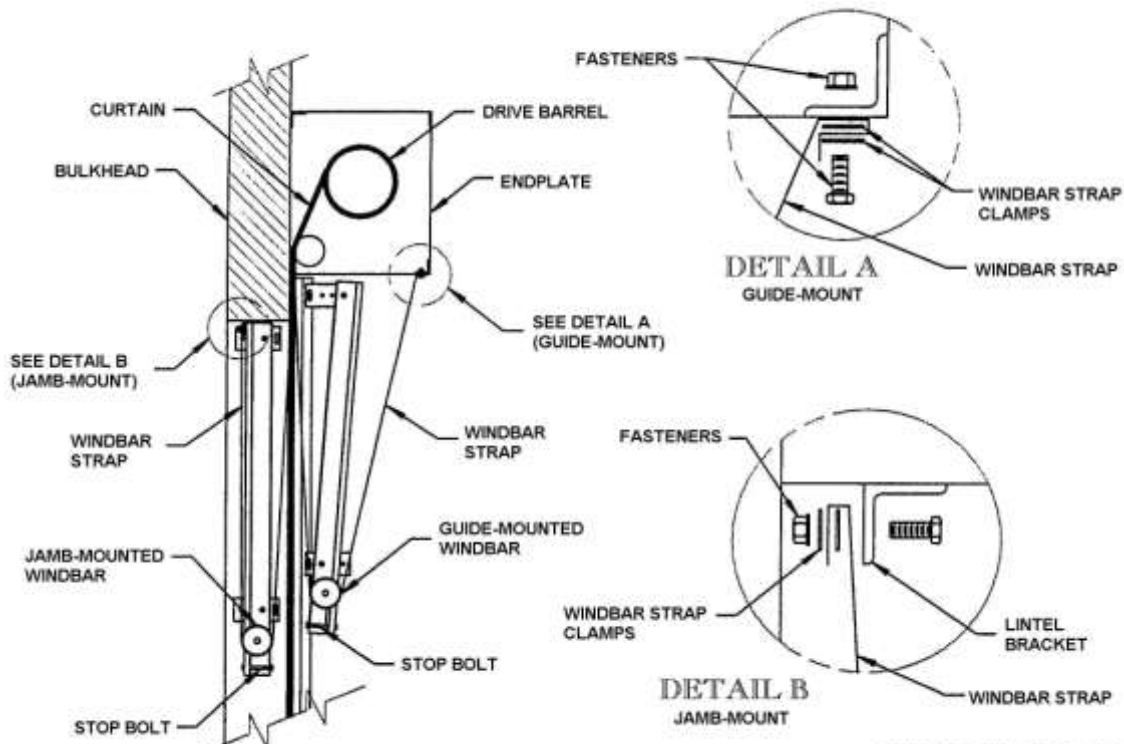
Carefully raise the door to the open position, examine the location of the windbar with respect to the top of its tracks. If adjustments to the windbar straps are required, return the door to the closed position to do so.

Once the adjustments are complete, trim excess strap material, leaving a minimum of three (3) full wraps of strap on the spool of the ratchets.

## TRAVELLING WINDBAR ASSEMBLY WINDBAR TUBE INSTALLATION

### STEP 4 (FOR 4" OR 4-1/2" WINDBARS)

- With the door in the closed position, disconnect the power supply.
- \*Note: Roller wheels may come factory-installed in windbar tube.
- Insert a roller wheel into each end of the windbar tube. "Snuggly" install a set screw and nut (nut supplied as a spacer) in both ends of the windbar tube (do not over-tighten). With set screws in place, the roller wheels will extend and retract without separating from the windbar tube.
- Lift the windbar into the bottom of the tracks. Insert a stop bolt (3/8-16NC x 3-1/2" LG HHCS) into the hole at the bottom of each track and secure with a 3/8-16NC hex nut.
- Route the windbar straps around the bottom of the windbar tube, then upward towards the lintel (jamb-mount) or spreader bar (guide-mount). Check that there are no twists in the straps.
- Route the loose end of each windbar strap between individual windbar strap clamps and temporarily fasten to the lintel bracket (jamb-mount) or spreader bar (guide-mount).
- Carefully raise the door to the open position. Examine the location of the windbar with respect to the top of its tracks. If adjustments to the windbar straps are required, return the door to the closed position to do so.
- Once adjustments are complete, secure the windbar strap and clamps to the lintel bracket (jamb-mount) or spreader bar (guide-mount) with the fasteners provided. Trim excess strap material leaving at least 1-1/2" of extra strap hanging below the strap clamps and fasteners.



WINDBAR TUBE INSTALLATION  
DWG NO. 94-0565 JAN 6, 1999

## **Periodic Maintenance**

Albany Door Systems high speed doors are engineered for low maintenance operation. The door should be visually inspected daily for wear and tear, and operated to verify functions. Quarterly maintenance should be performed to clean components and to check all safety functions and check for mechanical and electrical integrity.

### **Daily Inspection**

1. Inspect the door fabric for wear or damage.
2. Operate the door through several openings and closings. Verify that the door seats against the floor and that the door fabric remains tight and does not wrinkle. Verify that the door opens fully, slightly beyond the wall opening, and does not open too far.
  - If the door does not seat against the floor properly or opens to the wrong position, refer to “Setting Door Limit Adjustments”.
  - If the door fabric has diagonal wrinkles the door fabric roll at the top of the door is not level and perpendicular to the side rails. Leveling adjustments should be made as soon as possible to prevent wear or damage. Refer to the installation instructions or contact Albany Door Systems.
3. With the door closing, place an object through the light curtain, or photo eyes, on each side of the door. Verify that the door stops immediately.
4. If a multiple panel door is installed, check at each end of the ribs to verify that they are in place and centered.
5. Inspect the coiled electrical wire for wear or damage.
6. Check the light curtain slots for dirt or dust accumulation and clean as necessary.



**Do not stand under the door when performing the following inspection. If the bottom bar reversing switch is not functioning correctly injury can occur.**

7. While the door is closing, tap the bottom of the door edge wand verify that the door stops and reverses to a fully open position.
8. See the applicable control panel or installation manual for operation details pertaining to the controls.

