



PART NUMBER 350016-0000

RAPID-ROLL DOOR OWNER'S MANUAL



MODEL 355

Version November 2006

**975-A OLD NORCROSS ROAD
LAWRENCEVILLE, GA 30045**

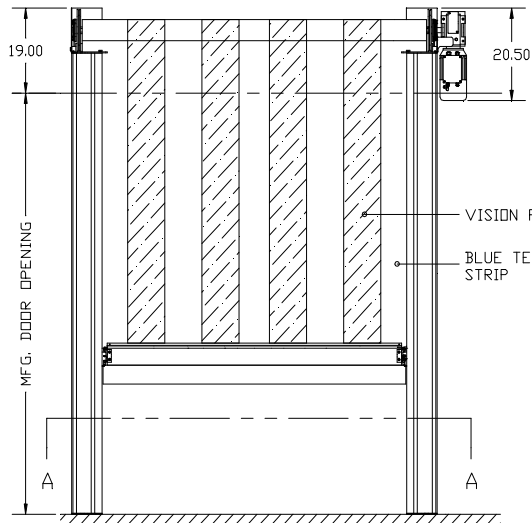
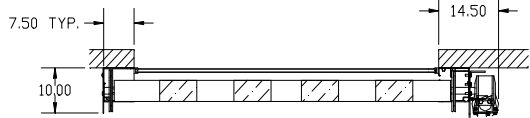
(770) 338-5000 TEL

(770) 338-5034 FAX

(877) 925-2468 TOLL FREE

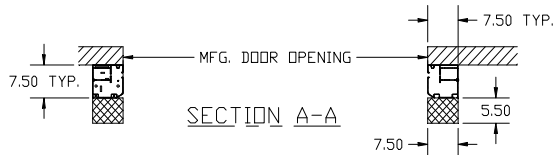
WARNING

DO NOT INSTALL, OPERATE, OR SERVICE THIS PRODUCT UNLESS YOU HAVE READ AND UNDERSTAND THE SAFETY PRACTICES, WARNINGS, INSTALLATION, AND MAINTENANCE INSTRUCTIONS CONTAINED IN THIS MANUAL.



RAPID ROLL® MODEL 355

OPENING SIZE	W=	H=	
MFG. DOOR SIZE	W=	H=	
OPERATOR LOCATION	LH	RH	
FUNCTION	AUTOMATIC	NON-AUTOMATIC	
CONTROL PANEL	ALLSTAR	<695>	
PRIMARY VOLTAGE	208-240 V	440-480 V 575 V	
DOOR ACTUATORS (QUANTITY)	PUSHBUTTON	<901>	
	PULL SWITCH	<911>	
	RADIO TRANSMITTER	4-BUTTON	<920>
		1-BUTTON	<921>
	RADIO RECEIVER	<925>	
	FLOOR LOOP RECEIVER 24 V	<930>	
	SAFETY PHOTOCELL	THRU-BEAM	<940>
		REFLECTIVE	<941>
MOTION DETECTOR	WIDE	<950>	
	NARROW	<951>	
PRESENCE SENSOR	<955>		
FABRIC	CLEAR PVC WITH CLEAR TENSIONING STRIPS		
COMMENTS:			



SPACE REQUIRED FOR SIDE FRAME COVER REMOVAL

NOTES:
 1) MEASUREMENTS ARE IN INCHES UNLESS OTHERWISE NOTED.
 2) RIGHT HAND CONFIGURATION SHOWN, LEFT HAND CONFIGURATION OPPOSITE

ALBANY INTERNATIONAL
 Nomafa Division
 DRAWING NAME MODEL 355
 RAPID ROLL DOOR
 DRAWING NUMBER
 355-0001

CUSTOMER	DRAWN BY	JR
LOCATION	DATE	11/99
DEALER/SALESMAN	REVISION	A
DOOR #	DATE	SCALE
		N.T.S.

APPROVED BY: _____ APPROVED WITH CHANGES AS NOTED BY: _____

**STATEMENT OF WARRANTY
RAPID-ROLL™ MODEL 355**

**EXCLUSIVE FIVE YEAR WARRANTY
ON BALANCE/TENSIONING SPRINGS**

Albany Door Systems warrants to the original owner of the door that the **BALANCE/TENSIONING SPRINGS** will be free of defects in materials and workmanship for a period of **FIVE (5) YEARS** from the date of shipment.

**ONE YEAR WARRANTY ON DOOR PANEL, MECHANICAL & ELECTRICAL
COMPONENTS**

Albany Door Systems warrants to the original owner of the door that the door panel fabric, mechanical and electrical components will be free of defects in material and workmanship for a period of **twelve (12) months** from the date of shipment.

Only defects brought to the attention of **Albany Door Systems** during the warranty period will be covered by this warranty.

Albany Door Systems will replace, or repair any component parts that are found to be defective upon inspection by an **Albany Door Systems** representative.

This warranty does not cover damage caused by collision or other abuse of the product. Adjustments made to the Control Panel or to the mechanical operation of the door without the authorization of **Albany Door Systems** will void this warranty.

The replacement provisions shall be the limit of **Albany Door Systems** responsibility under this warranty and **Albany Door Systems** shall not be responsible for any other losses or damages due to the operation of any door or parts covered by this warranty.

No other oral or written representations made by **Albany Door Systems** or its agents are a part of this warranty unless specifically set forth in writing by an authorized **Albany Door Systems** official.

THE ABOVE SET FORTH WARRANTY IS SELLER'S SOLE WARRANTY. SELLER MAKES NO OTHER WARRANTY OF ANY KIND WHATSOEVER, EXPRESSED OR IMPLIED; AND ALL IMPLIED WARRANTIES OF MERCHANTABILITY AND FITNESS FOR A PARTICULAR PURPOSE WHICH EXCEED THE AFORESTATED OBLIGATION ARE HEREBY DISCLAIMED BY SELLER AND EXCLUDED FROM THIS AGREEMENT.

USW-355-00

SAFETY PRACTICES

WARNING

THOROUGHLY READ THESE SAFETY PRACTICES PRIOR TO INSTALLING, OPERATING, OR SERVICING A HIGH-SPEED, RAPID-ROLL™ DOOR. FAILURE TO FOLLOW THESE SAFETY PRACTICES MAY RESULT IN PROPERTY DAMAGE, PERSONNEL BODILY INJURY, OR DEATH.

1. Do not operate a RAPID-ROLL™ Door while you are under the influence of drugs or alcohol.
2. Do not use the door if any parts appear to be broken or damaged.
3. Stay clear of the door while it is operating.
4. Keep hands and feet clear of the door at all times.
5. Do not drive through the door opening unless door is completely open.
6. Maintain a clear door opening at all times. Keep the door opening free of any obstructions.
7. Remove power at the fused disconnect during all electrical or mechanical service. OSHA requires a disconnect to be properly tagged and locked out during all maintenance or service of equipment.
8. All electrical troubleshooting or service must be performed by a qualified electrician or service person and must meet all applicable local, state, federal, international, and other governing agency codes.
9. **USE EXTREME CAUTION** when it is necessary to service the control panel while it is energized.
10. If you have any questions, please contact your local Albany service provider for assistance. Otherwise contact **Albany Door Systems** at 1-877-925-2468 for information on your local distributor.

PACKING LIST

Before beginning the installation, thoroughly inspect the crate to ensure all necessary components are there. The following list applies to a standard Model 355 door (No optional parts are included unless ordered that way).

- Left Hand and Right Hand Side Columns with attached Covers (1 set)
- Top Roll Assembly (1)
- Drive Unit w/torque arrestor bracket (1)
- Electrical Control Panel (1)
- Safety Photocells (1 set)1
- Bottom Rail Profile (1)
- Counterbalance Springs (2)
- Tensioning Ropes (2)
- Width Gauge
- Assembly Hardware

OPTIONAL PARTS

- Motion Detector
- Floor Loop
- Transmitters
- Auxiliary Pushbuttons Stations
- Pull Cords

SUGGESTED TOOLS REQUIRED

- 5mm allen wrench
- 6mm allen wrench
- 8mm allen wrench
- 18mm open end wrench
- Screwdriver
- Tape Measure
- Come-a-along
- Water Level
- Carpenters Level
- Hammer
- Wrench set (SAE)
- Screwdriver Set
- Wrench set (METRIC)
- Drill bits

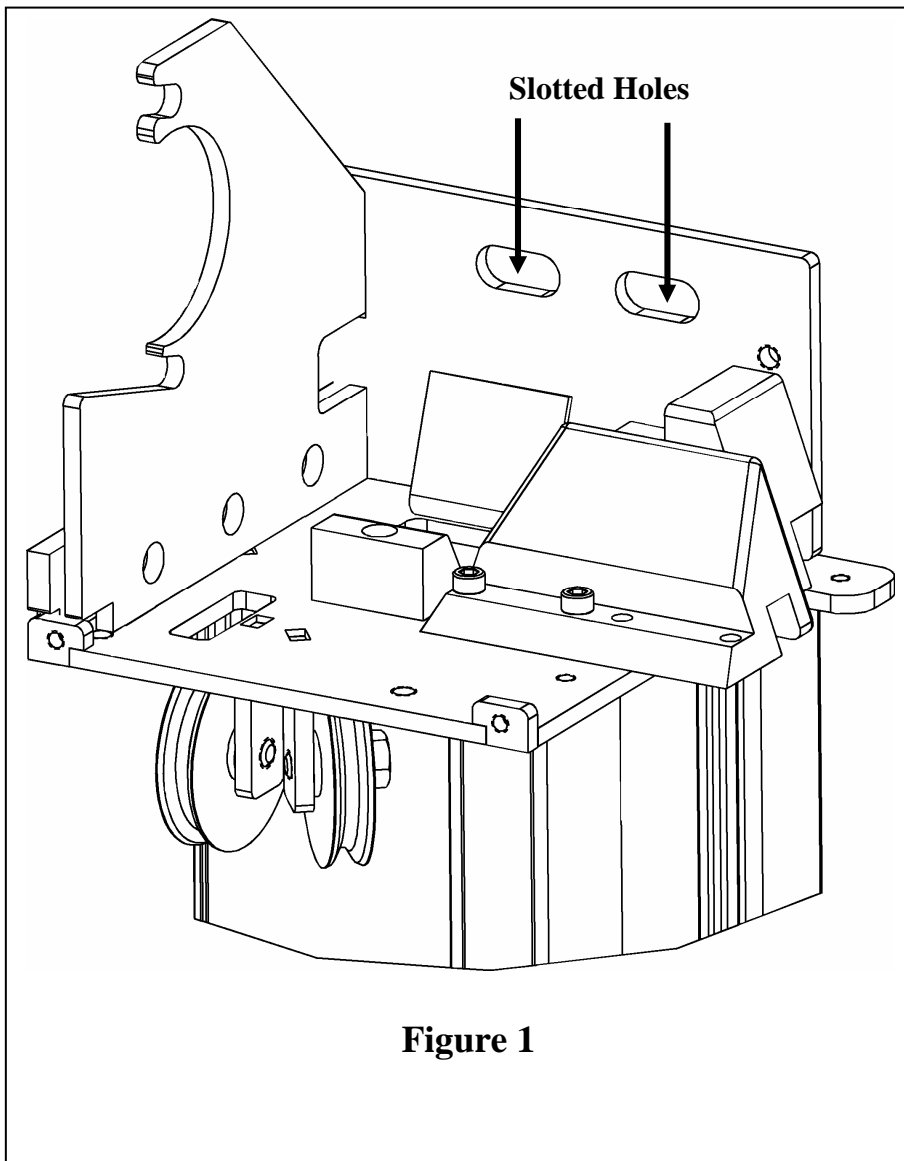
MODEL 355 MECHANICAL INSTALLATION

Step 1. Unpack crate and inventory parts, comparing against the packing list in the front of this manual, to verify all parts are on site.

Step 2. Using a tape measure, determine the clear opening width. Compare this measurement with the door ordered width. See crate label for door ordered dimensions.

NOTE

THE CLEAR OPENING WIDTH MUST BE THE SAME AS THE DOOR MANUFACTURED WIDTH IN ORDER FOR THE RESET SYSTEM TO FUNCTION PROPERLY. THIS MEANS THE DISTANCE BETWEEN THE SIDE FRAMES AT THE TOP, MIDDLE AND BOTTOM MUST EQUAL THE DOOR WIDTH.



Step 3. Verify that the opening is plumb and that the floor slab is level. Shimming may be required to level the side columns but no more than 1/2". Refer to approval drawings for this door to confirm drive side mounting (left or right-hand).

Step 4. Remove the side columns from crate (one at a time). Remove covers from both side columns and set aside. Remove springs and inner covers from both side columns. Erect both columns and place them in position against the wall with inner edges in line with the door jambs. Verify the width per door specification.

Step 5. Plumb both side columns and secure them to the wall using proper anchoring hardware. The anchor holes are slotted to allow for adjustment of door width and centering over the door opening. (**Figure 1 and Figure 2**)

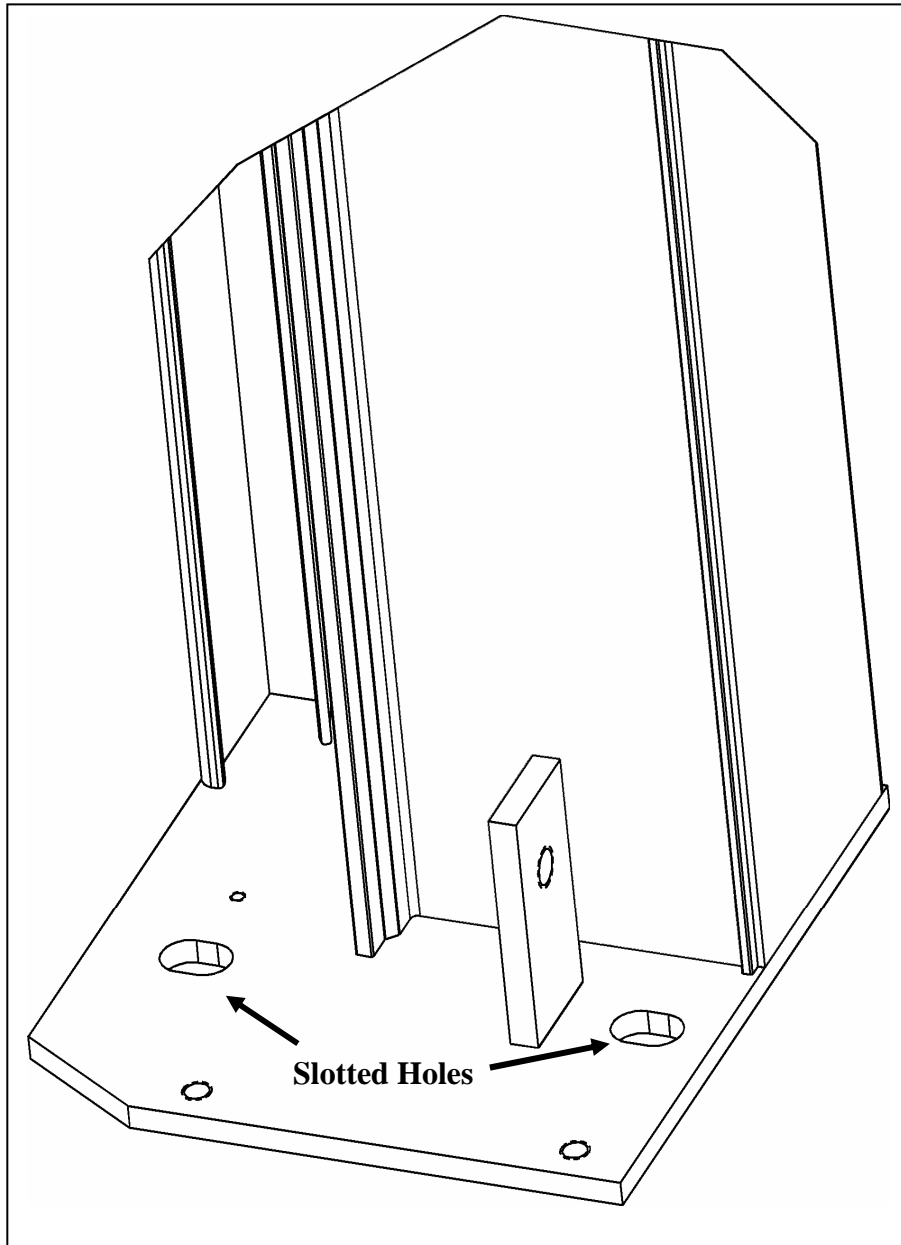


Figure 2

Step 6. Attach width gauge to the rear of door at both head plates. Removal of the black plastic funnels on the head plates will make installing the width gauge easier along with the routing of the photocell cables. Run wires under the back funnel and inside width gauge, from non-drive side to drive side of door. These wires are for photocells, contactless safety edge photocells, and SRD2™ sensors.

Step 7. Using an approved lifting device, place a lifting strap around the top roll assembly, lift and remove from shipping crate. Raise the top roll assembly into position and lower it slowly onto the top of both side columns. Ensure the bearing housings are located outside the head plates. Secure the top roll at both head plates on each side of door. (**Figure 3**)

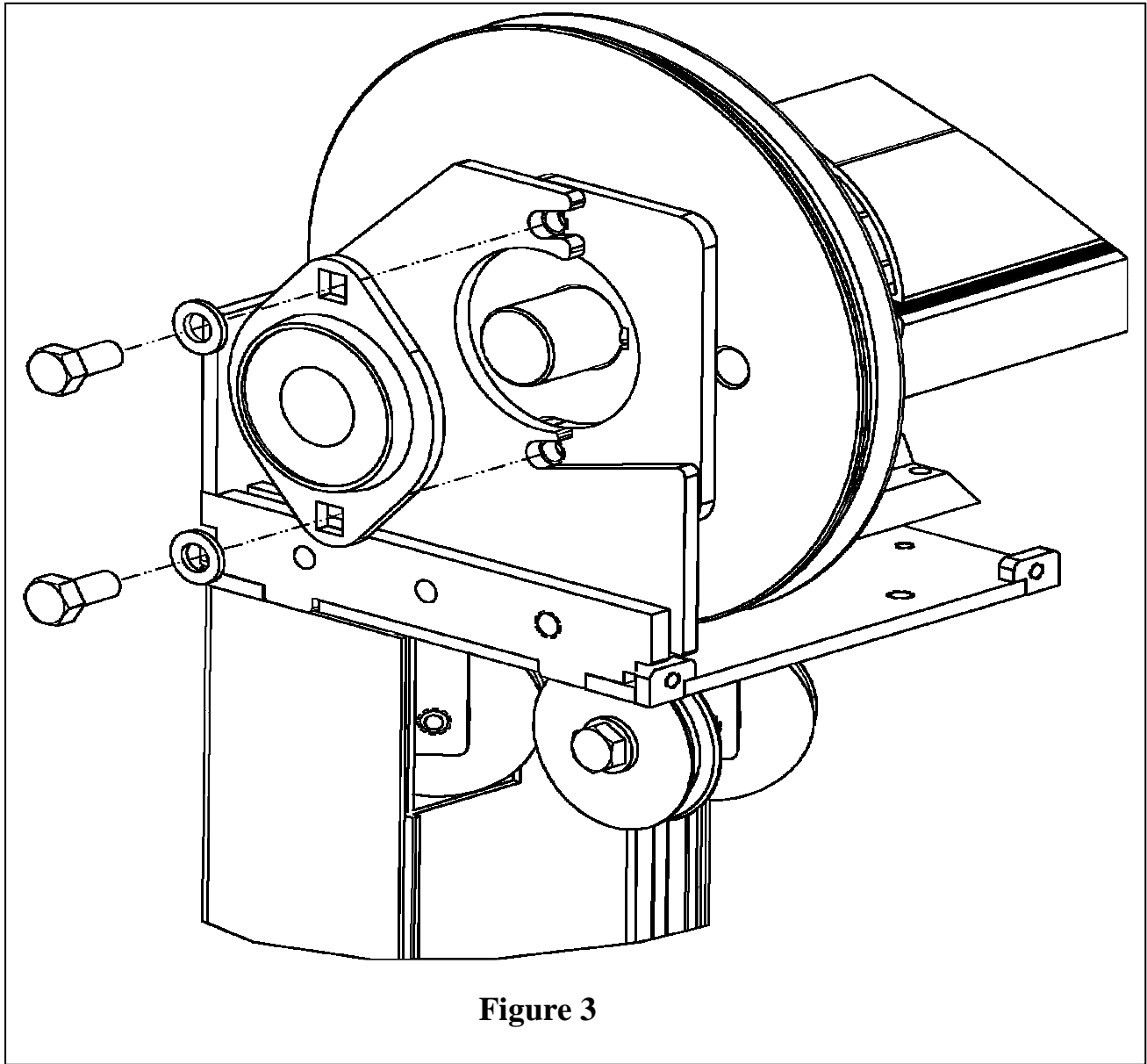


Figure 3

Step 8. Slide the drive unit onto the drive side stub axle. Attach torque arrestor bracket to the head plate.

Step 9. Remove straps holding door fabric in place. Disengage the drive unit brake by pulling down on the brake release lever and rotate the top roll until the bottom edge of the fabric is approximately 30 mm (1.25 in) below the head plates.

Step 10. Attach and place 2 pre-wraps of tensioning rope on both rope pulleys and allow rope to drape down over the front of the side columns. (**Figure 4**)

Special instructions for rope

The white rope does not so readily fit into the groove of the take up spool and requires a special step to allow for this. You must pull the single inner core of the rope out about 4 inches and cut it. This will help in reducing the diameter of the rope at the leading end. Then use a lighter to heat the end of the rope and roll it between your fingers to slightly shrink the end of the rope. This will give the rope some rigidity so that you can now thread it into the take up spool. Be careful not to burn your fingers when doing this.

DO NOT DRILL HOLE IN TAKE UP DRUM FOR ROPE.

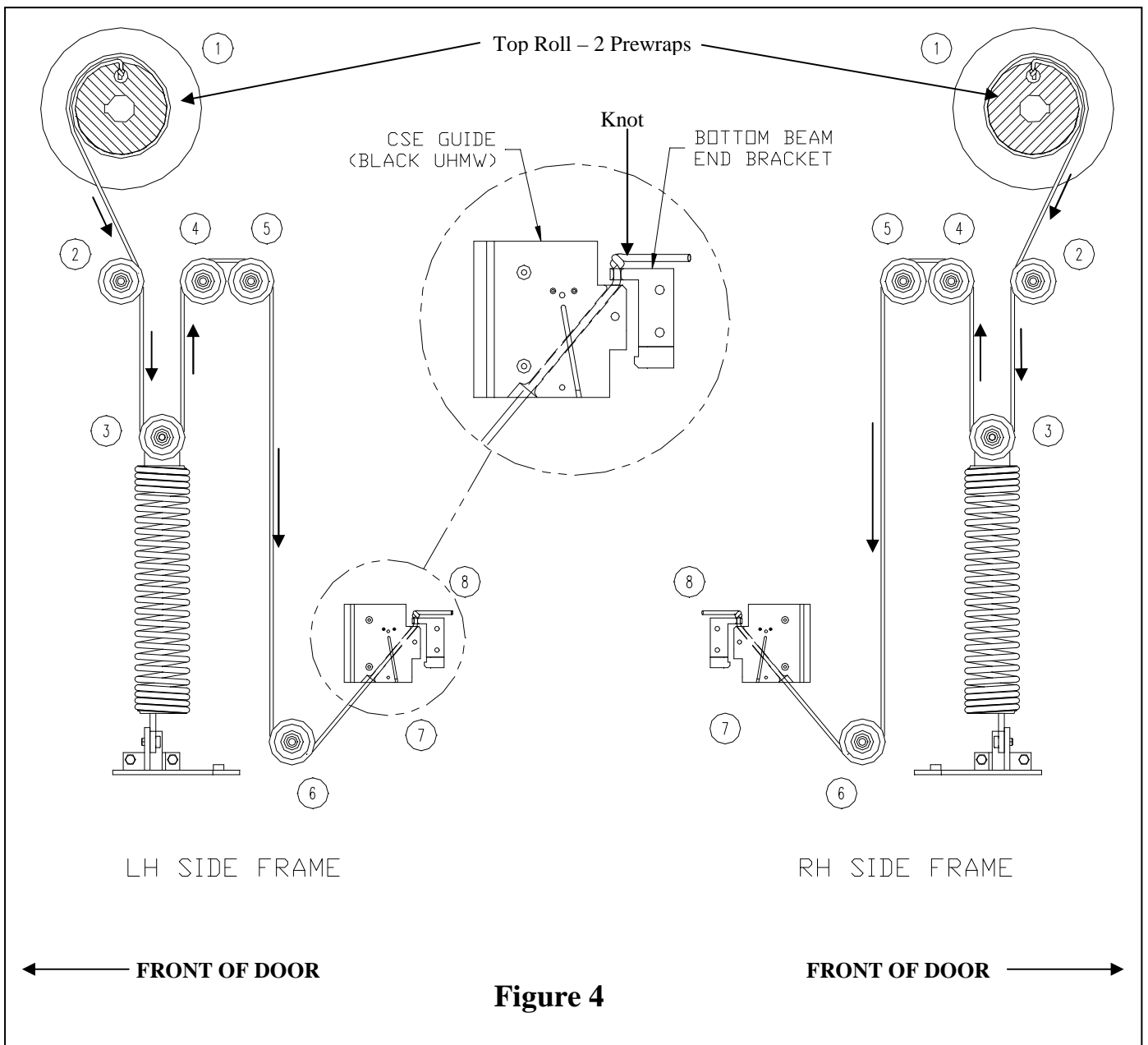


Figure 4

Step 11. Slide the bottom rail profile into the base of the curtain and center. Once the bottom beam is centered, then locate the 2 predrilled holes on each end of profile, drill through the fabric and use the provided slotted screws and acorn nut to secure the bottom beam in place.

Step 12. Run the tensioning rope through the appropriate pulleys in the counterbalance system corresponding to the drawing placed inside the side columns. Ensure the rope is run through the sliding part of the CSE block. **(Figure 4)** Run the rope through the hole in the aluminum bracket on bottom profile.

While running the rope for the door try to ensure that there are no twists or kinks in the rope.

DO NOT CUT EXCESS ROPE UNTIL STEP 15 HAS BEEN DONE.

Step 13. Re-install both inner side column covers. Re-install counterbalance springs inside side columns. Take note that the springs must be attached so that the spring is sitting against the short section of brush that is on the inner cover. This brush dampens the movement of the spring allowing for a quiet function. The spring will be noisy if this step is not performed correctly.

Step 14. Using a come-a-long or similar pulling device, stretch the springs to the horizontal arrows marked on the diagrams located on the side column covers. Remove slack from the tensioning rope and secure rope in place by tying a knot in it **(Figure 4)**.

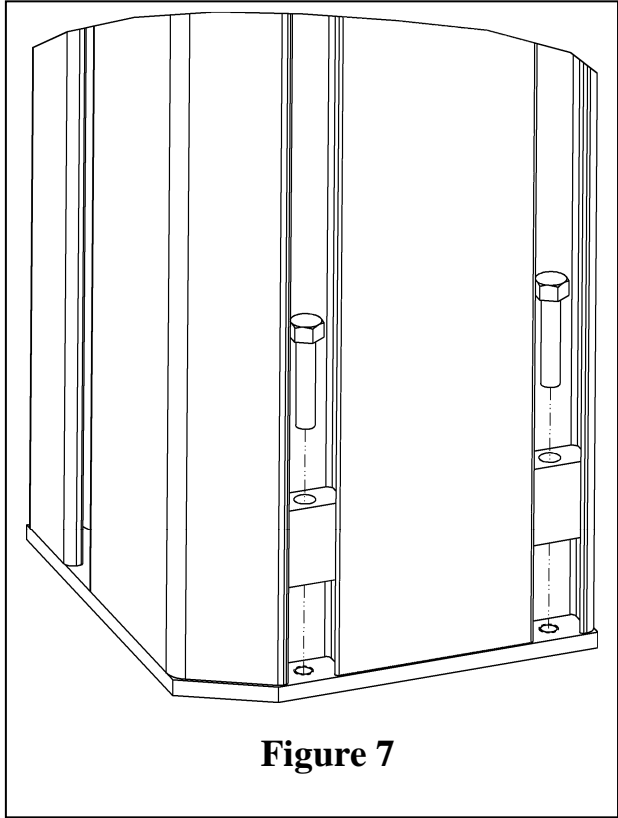
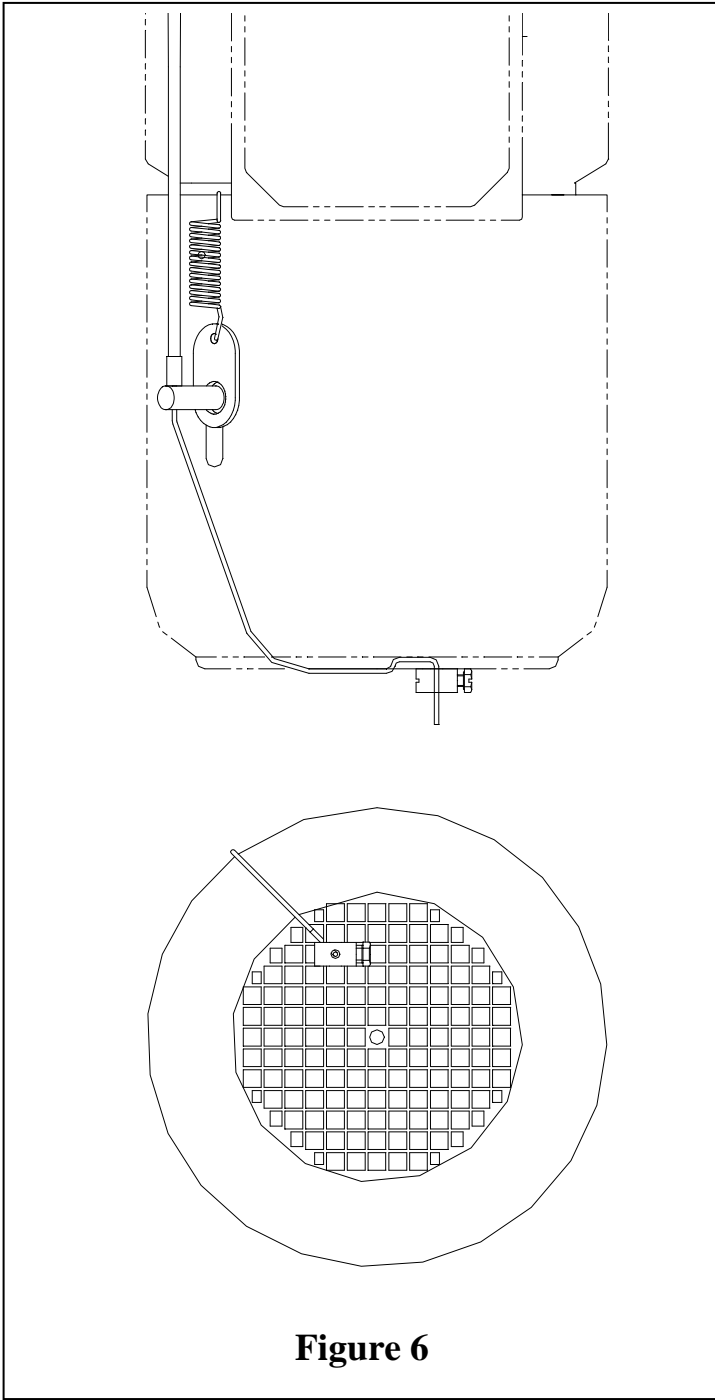
Step 15. When the counter balance system has been fully installed, disengage the drive unit brake and manually move door over its entire range of motion. Ensure that the fabric and windclips go behind the inner cover. **NOTE: The door must be cycled 20-30 times to allow for the rope to stretch. This will require you to make additional adjustments to the spring tension. Once the stretching has settled, you can then put the door into operation. Be very sure that this is done before cutting the excess rope.**

Step 16 is detailed in the following two pages

Step 16. Run cable for bowden lever (emergency disengagement lever pre-mounted on drive side, side column cover) through pre-drilled hole in the head plate. Pull enough slack thru so that you can now slide the 2' section of the cable sheating on. Run cable down through the brake release lever on the side of the motor. Loop the cable thru the grid on the bottom of the motor fan cover and use the barrel clamp supplied to fix the cable to the fan cover. Do not extra cable until final adjustments are made. **(Figure 6)** Additional adjusting may be required once the sideframe cover is installed so that the brake release works properly. Attach the other end of cable (with spring) to the bowden lever while installing drive side cover profile at the same time. Secure cover profile at the top and bottom using supplied bolts **(Figure 7)**. Check and ensure that when you pull on the disengagement handle the door releases and can be pulled up or down.

Step 17. Install the remaining cover profile on the other side of the door using supplied bolts.

Step 18. Attach barrel cover to both head plate mounting brackets using supplied screws and washers. Place the side column covers over the head plates and attach using supplied screws.



INSTALLATION OF MANUAL DISENGAGEMENT LEVER

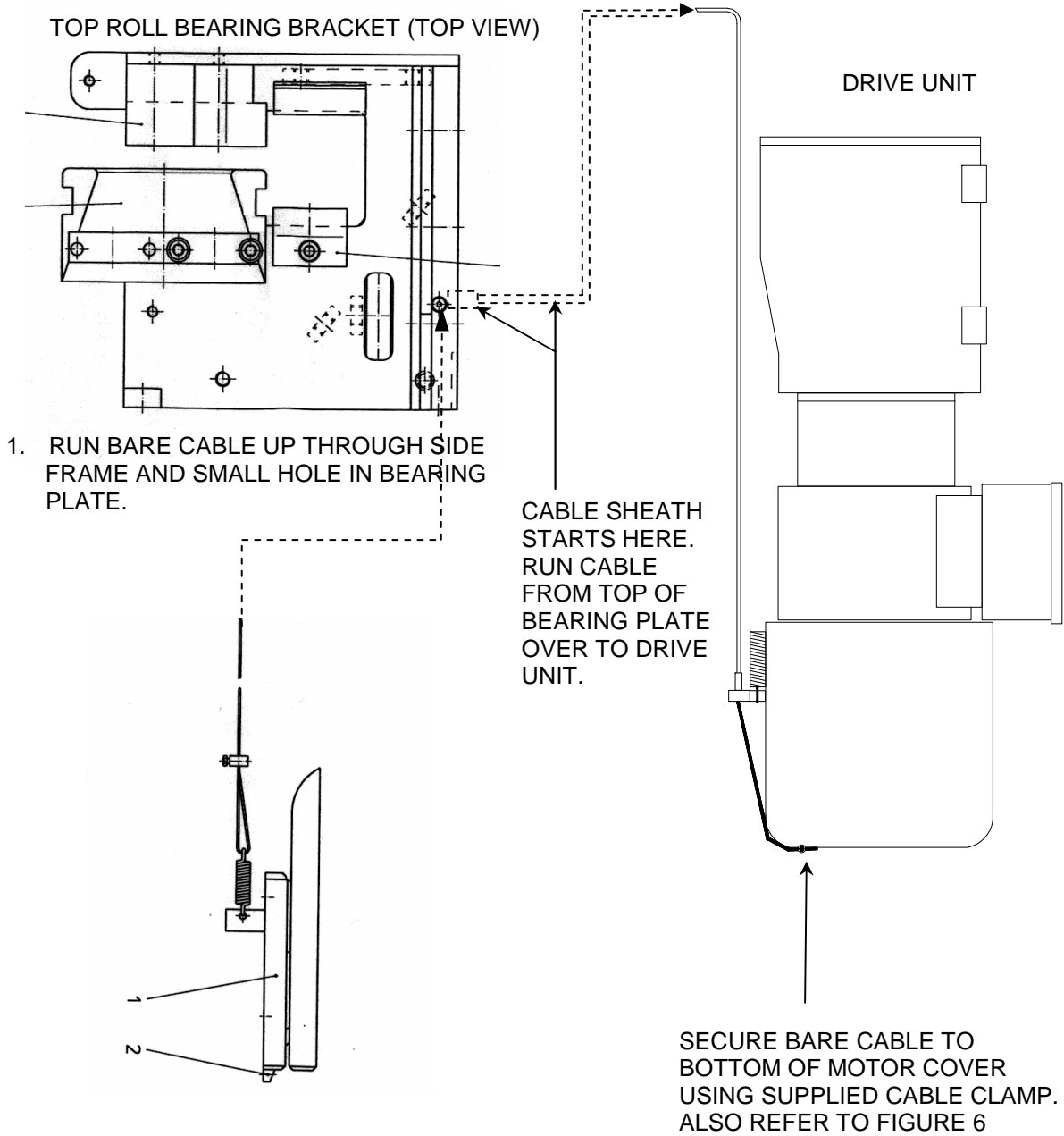


Figure 9

THRU-WALL DISENGAGEMENT LEVER INSTALLATION

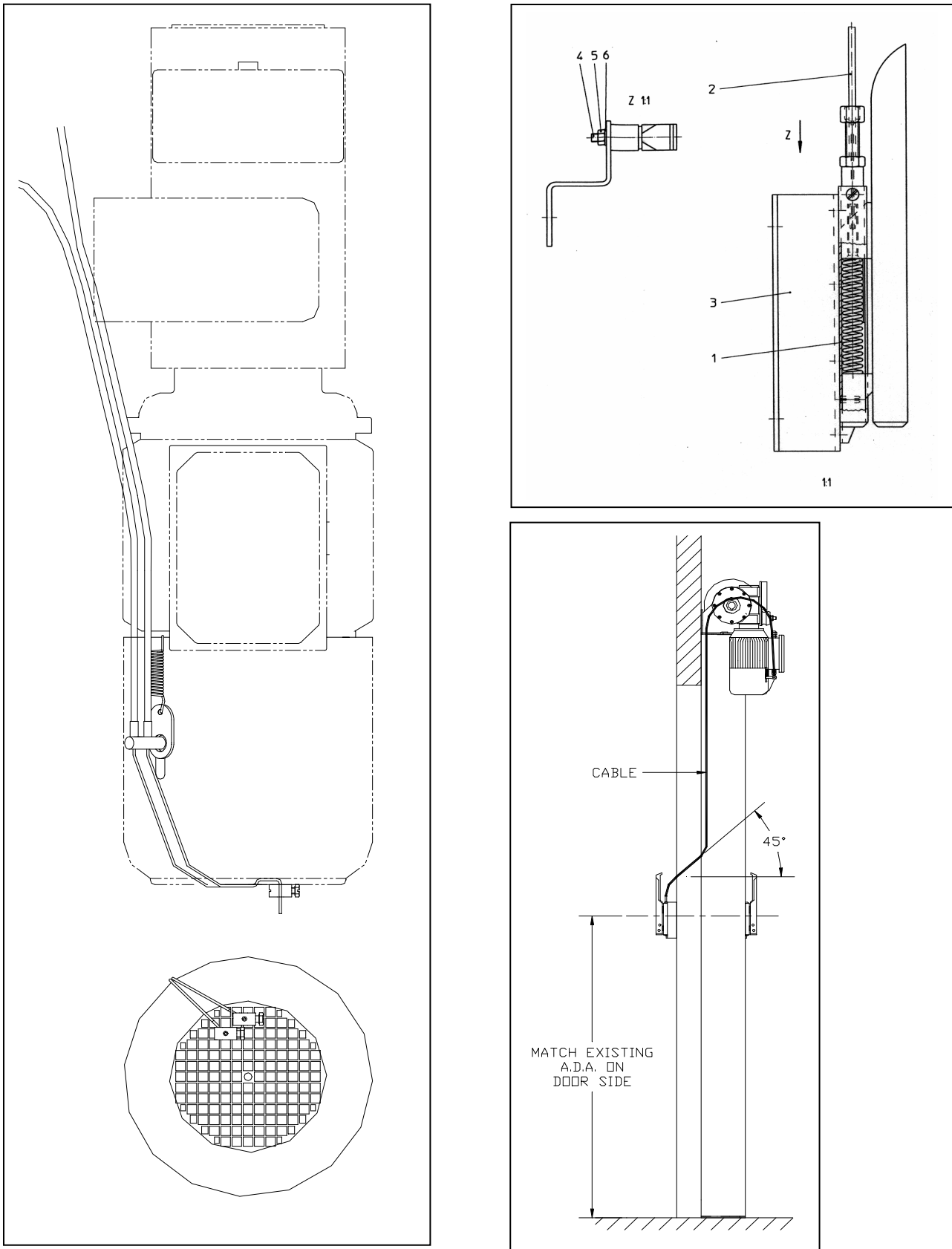


Figure 10

ELECTRICAL INSTALLATION

The following instructions are recommended guidelines for electrically installing a typical Model 355 door. Actual wiring may be different based on what options, special instructions, special components, etc. were ordered with the door. Consult the electrical schematics that are supplied with the door. These should be located inside the control panel.

WARNING

CONTROL PANEL CONTAINS HIGH VOLTAGE. THE FOLLOWING PROCEDURES SHOULD BE PERFORMED BY QUALIFIED ELECTRICAL PERSONNEL ONLY. WIRING MUST MEET ALL LOCAL, STATE, FEDERAL, INTERNATIONAL, OR OTHER GOVERNMENT AGENCY CODES. FAILURE TO DO COULD RESULT IN SERIOUS INJURY OR DEATH.

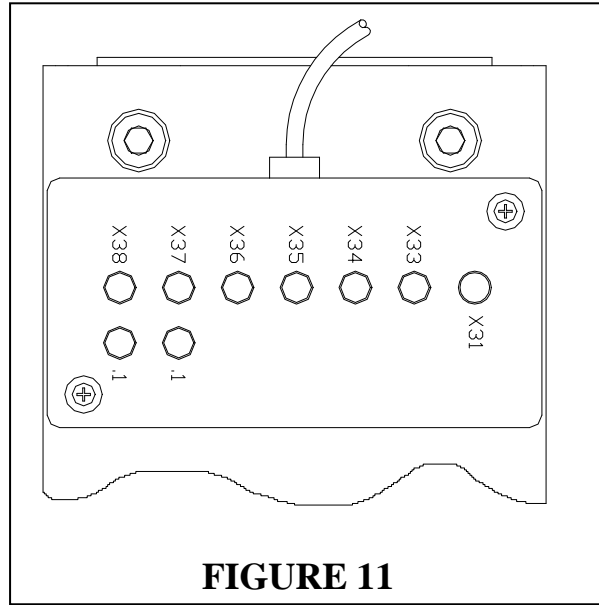
NOTE

TO AID THE WIRING AND SERVICE OF ALL ELECTRICAL CIRCUITS, TAG OR LABEL ALL WIRE ENDS DURING THE FOLLOWING ELECTRICAL INSTALLATION. ALSO, ALL THREE PHASE POWER WIRES SHOULD BE RUN IN SEPARATE CONDUIT FROM ALL OTHER CONTROL CIRCUIT WIRING (I.E. PULSE ENCODER WIRING).

1. Mount the control panel at a height of approximately four feet from the floor on the drive side of the door.
2. Run electrical conduit and wires for: pulse encoder cable, drive unit power leads, and receptacle cable. Plug all wires into the electrical receptacles located above the drive unit (**Figure 11**).
3. Install all the actuators and wire according to the electrical schematics supplied with the door.
4. Install a fused disconnect beside the control panel. The main supply to the All★Star drive system can be from 208 VAC up to 600 VAC. The control panel is fused at 15 amps.

CAUTION

VERIFY ALL FIELD WIRING TO ENSURE TERMINAL CONNECTIONS ARE TIGHT AND CORRECT. A FUSED DISCONNECT IS REQUIRED FOR EACH ALBANY DOOR AS A MEANS OF DISCONNECTING INCOMING POWER FROM THE CONTROL PANEL. THIS DISCONNECT IS NORMALLY SUPPLIED BY OTHERS.



Label	What	Plug	Location
X31	THERMAL SWITCH	3 WIRE	BLK. WIRE MOTOR
X33	TOP OPEN PROX.	3 WIRE	BLK. WIRE SIDE FRAME
X35	PHOTOCELL RECEIVER	3 WIRE	LEFT SIDE FRAME
X36	PHOTOCELL TRANSMITTER	3 WIRE	RIGHT SIDE FRAME
X37.1	CSE RECIEVER	4 WIRE	RIGHT SIDE FRAME
X38.1	CSE TRANSMITTER	4 WIRE	LEFT SIDE FRAME

WARNING

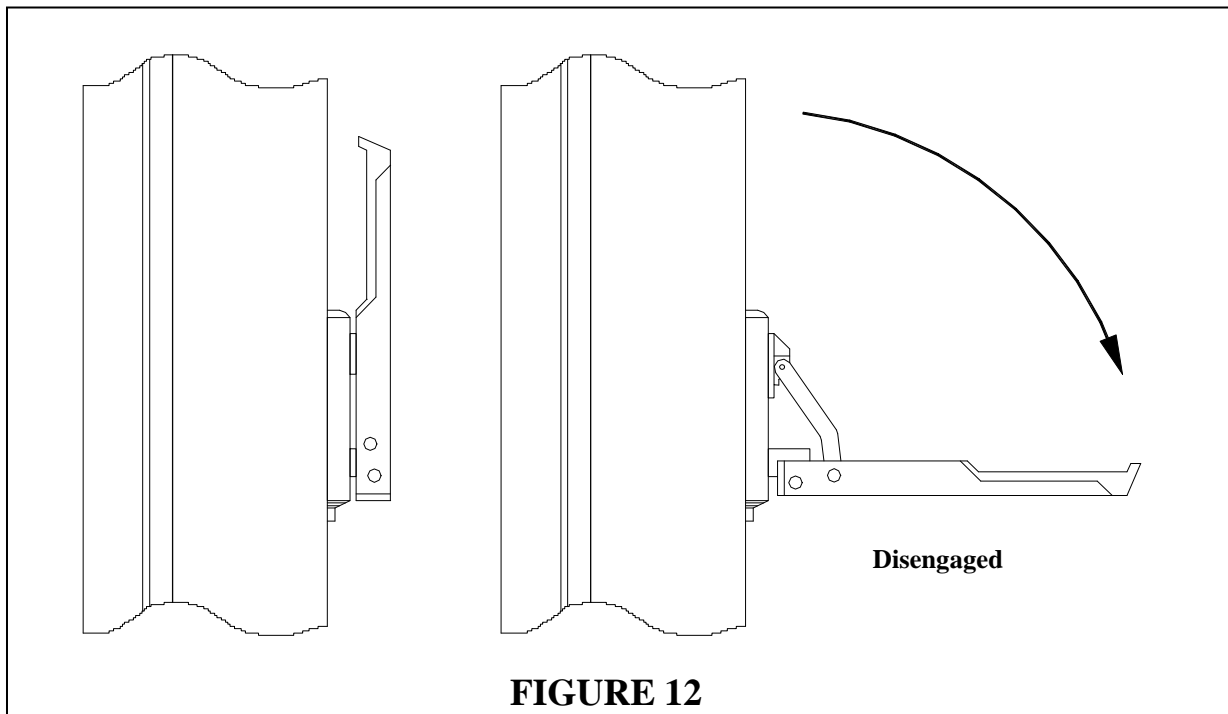
BEFORE APPLYING POWER TO CONTROL PANEL, CHECK LINE VOLTAGE AT DISCONNECT WITH A VOLTMETER.

ELECTRICAL START UP

Step 1. Manually bring the door to the halfway closed position. This can be done by pulling down on the bowden lever to release the drive unit brake and moving the curtain by hand (**Figure 12**).

Step 2. Check for correct line voltage at the disconnect with a voltmeter. Utilize the All-Star control panel manual to make all field wire connections to the panel. Apply power to the control panel. Ensure the **POWER LED**'s on both the PLC and frequency inverter are lit. Also ensure that the **RUN LED** is lit on the PLC.

Step 3. Push the **SETUP** button. The **RESET** light on the outside of the panel will come on and relay CR-11 will be energized at this point. Using the **OPEN/CLOSE JOG DOOR** button located on the control panel backplate (small rocker switch), jog the door in the close direction. If the door closes, go to the next step. If the door opens, then the phase rotation on the drive unit is backwards. Swap two of the three motor leads in the panel to change the motor rotation (terminals T11, T12, T13).



SETTING DOOR LIMITS

NOTE

IT IS IMPORTANT TO ENSURE THE DOOR IS MOVING WHEN THE RESET BUTTON IS PUSHED TO SET THE CLOSE LIMIT. DO NOT RELEASE JOG SWITCH UNTIL DOOR HAS STOPPED.

Step 1. Press **SETUP** button. Reset light will turn on; this indicates that you are in the setup mode. Close the door using the **OPEN/CLOSE JOG DOOR** button. When the door reaches the close limit, press the **RESET** button while still jogging door. The door will stop automatically and the closed limit will be set. The reset light should turn off at this point as well.

Step 2. Press **SETUP** button. Open the door using the **OPEN/CLOSE JOG DOOR** button. When the door reaches the open limit proximity switch, it will stop automatically and the open limit will be set. The reset light should turn off at this point as well.

Step 3. Actuate door and observe the door limits (open and closed). Repeat steps 1 and 2 as necessary to finely adjust both door limits.

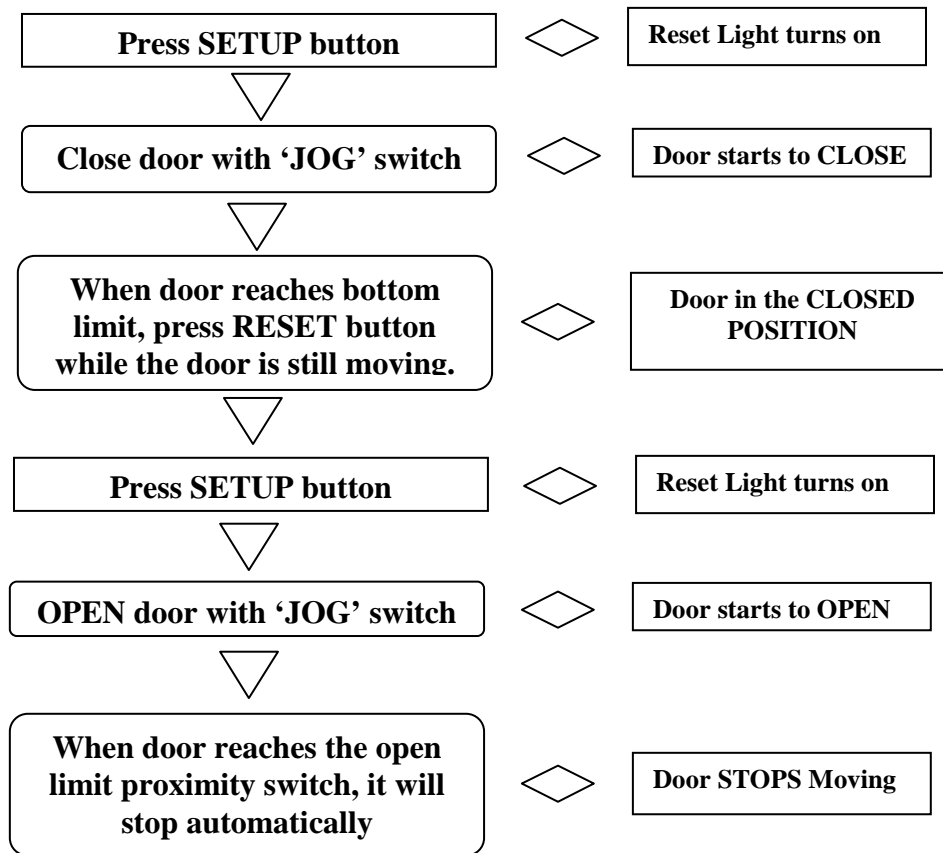
Step 4. Check all actuators for proper operation.

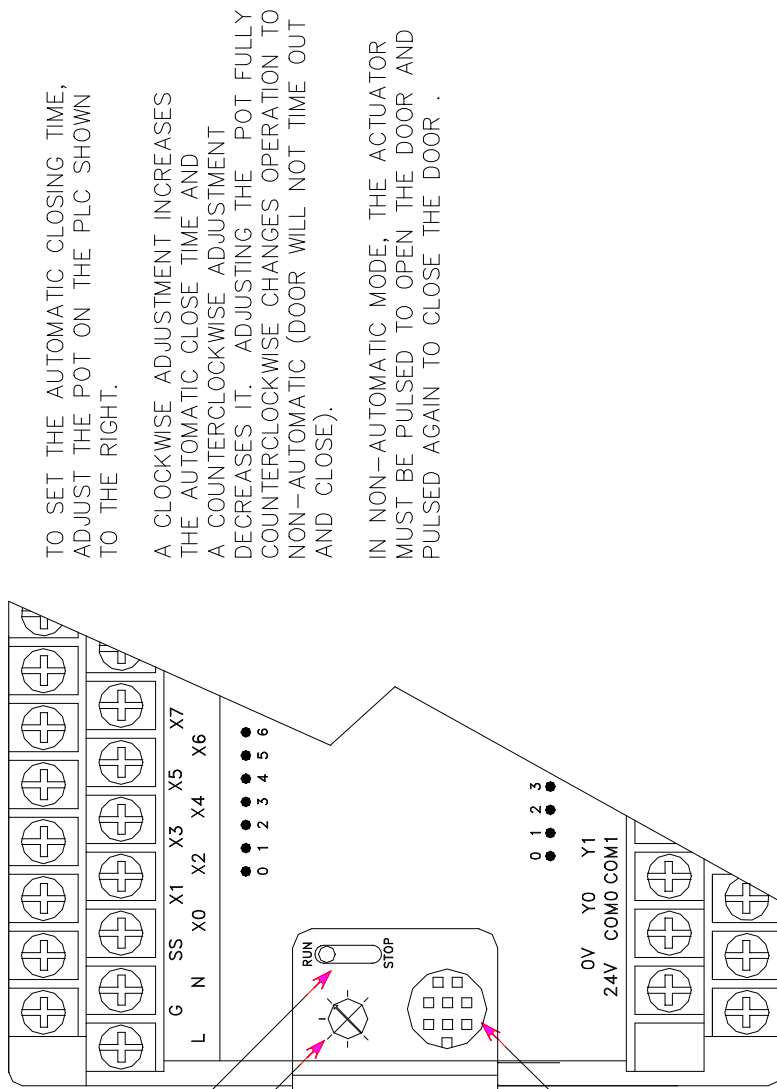
Step 5. Verify the automatic operation of the door. The time delay to close is adjustable via an adjustment screw on the face of the PLC (see drawing # NONAUTO). If non-automatic mode is desired for door operation, turn the adjustment screw fully counterclockwise. In non-automatic mode, the actuator must be pulsed to open the door and pulsed again to close the door.

NOTE

NON-AUTOMATIC MODE CANNOT BE USED WITH MOTION DETECTORS, LOOP DETECTORS, OR PRESENCE SENSORS.

Quick reference for setting limits





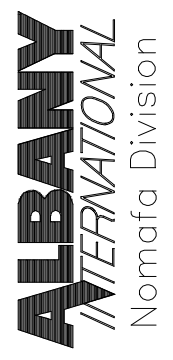
TO SET THE AUTOMATIC CLOSING TIME, ADJUST THE POT ON THE PLC SHOWN TO THE RIGHT.

A CLOCKWISE ADJUSTMENT INCREASES THE AUTOMATIC CLOSE TIME AND A COUNTERCLOCKWISE ADJUSTMENT DECREASES IT. ADJUSTING THE POT FULLY COUNTERCLOCKWISE CHANGES OPERATION TO NON-AUTOMATIC (DOOR WILL NOT TIME OUT AND CLOSE).

IN NON-AUTOMATIC MODE, THE ACTUATOR MUST BE PULSED TO OPEN THE DOOR AND PULSED AGAIN TO CLOSE THE DOOR .

RUN SWITCH IS TO EXECUTE THE INTERNAL PROGRAM. (PLC MUST BE SET TO RUN)
 POT FOR CLOSE TIMER ADJUST FROM 1 TO 25 SECONDS AND NON-AUTO (PUSH TO CLOSE)

LID TO ACCESS CLOSING TIMER RUN/STOP SWITCH, AND DIN CONNECTOR
 DIN CONNECTOR USED FOR PROGRAM DOWNLOADING



PROGRAMMABLE LOGIC CLOSE TIMER AND NON-AUTO ADJUSTMENT.

DWG. NUMBER
 NONAUTO
 PAGE #
 1 of 1

REVISION	INT.	DATE	OPTIONS	INT.	DATE
ORIGINAL	RMR	022698			
CCW NA	RMR	051198			

MAINTENANCE

WARNING

REMOVE ALL POWER AT THE FUSED DISCONNECT DURING ALL ELECTRICAL OR MECHANICAL SERVICING. DISCONNECT MUST BE PROPERLY LOCKED OUT DURING MAINTENANCE OR SERVICE OF EQUIPMENT.

DAILY INSPECTION

- 1. Run through a full door cycle (open/close) and ensure smooth operation. Verify that the door is not jammed or hanging up.**
- 2. Check the door fabric for any visible damage or unusual wear.**
- 3. Check all actuators for proper operation. If applicable, verify the automatic operation of the door.**
- 4. Check the operation of safety photocells and bottom rail reset system.**

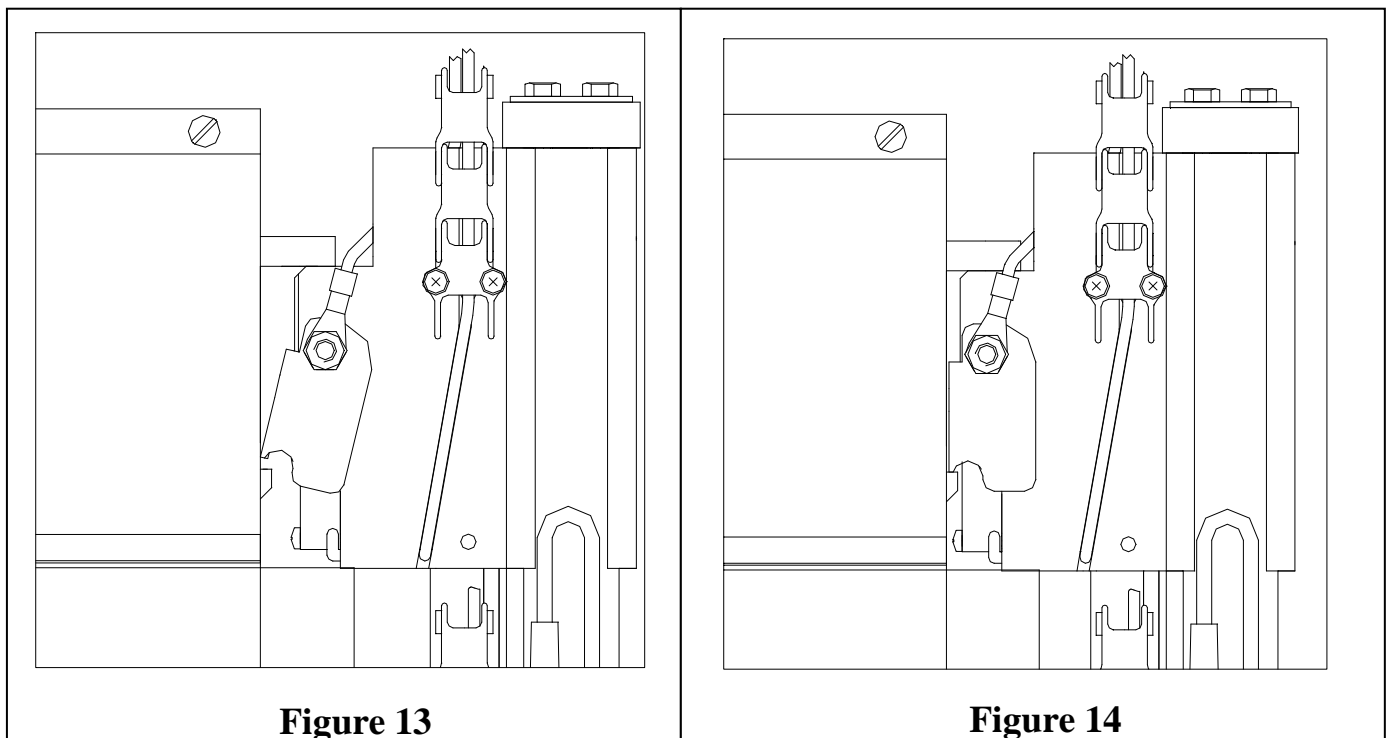
QUARTERLY INSPECTION

- 1. Inspect all hardware for proper tightness. Any loose hardware should be tightened. It is recommended to apply a thread locker compound to any bolts that are coming loose. i.e. Loctite 242 (blue).**
- 2. Observe both open and close door limits. Ensure a proper floor seal is intact when the door is fully closed. There should be no visible light seen between bottom rail rubber seal and floor. If limits are out of adjustment, re-adjust according to the procedure outlined in the electrical startup section of this manual.**
- 3. Inspect cables and pulleys for unusual wear. Ensure that either tensioning rope is not slack, misaligned, or fraying. Replace worn or damaged components as necessary.**

SRD2™ RESET SYSTEM

The Model 355 door comes standard with the SRD2™ self-repair device. The tensioning rope remains attached to the bottom rail profile allowing it to swing away if struck. The tension on the rope will automatically pull the bottom rail back into place. The Contactless Safety Edge™ does need to be reset, however. To accomplish this, perform the following procedure:

- 1. Ensure the door opening is completely clear of any obstructions.**
- 2. Push and hold the blue SRD2 button on the face of the control panel. The door will automatically close and re-latch the bottom rail with the Contactless Safety Edge™ photocells. The door will also stop automatically when the bottom limit is reached.**
- 3. Resume normal door operation.**
- 4. Figure 13 shows an improperly latched bottom beam, and Figure 14 shows a properly latched bottom beam.**



MODEL 355 TROUBLESHOOTING GUIDE

WARNING

ENSURE THAT THE POWER LED ON THE FREQUENCY INVERTER IS FULLY EXTINGUISHED WHENEVER DE-ENERGIZING CONTROL PANEL TO PERFORM ANY ELECTRICAL WORK (WAIT AT LEAST 30 SECONDS). THIS WILL INDICATE THAT THE HIGH VOLTAGE CAPACITORS HAVE BEEN FULLY DRAINED. FAILURE TO WAIT MAY RESULT IN ELECTRICAL SHOCK.

The **POWER** and **RUN** green LED's on the PLC must be on. If not, check for 120V power to terminals L&N. If no power is present, de-energize control panel and check main disconnect and all control panel fuses. The **POWER** LED on the frequency inverter must also be on. At least one input LED on the PLC should be on. If not, ensure the **EMERGENCY STOP** button is pulled out. If no inputs turn on, check for missing jumpers and/or switch wiring in series with the **EMERGENCY STOP** button; see drawing #AF35.

Whenever power has been removed to the control panel, the door will go through a setup routine to reset the door limits. It will open at jog speed until the home proximity switch (open limit) has been reached. It will then time out and continue to operate at normal speed.

PLC INPUTS² (X0-X7)

INPUTS ("IN" LED'S)	DESCRIPTION
0	Pulse encoder channel B – a counting signal utilized by the PLC to keep track of door position. Can be either on or off.
1	Pulse encoder channel A – a counting signal utilized by the PLC to keep track of door position. Can be either on or off.
2	SETUP button and top overrun proximity switch input – will place door in "setup" mode, reset button light will come on. (N/C) ³
3	Jumper wire – will be on continuously. (N/C)
4	Actuator input – will come on for as long as the actuator has been activated. If on continuously, check actuators.(N/O)
5	Safety Devices. Photocells and Contactless Safety Edge™ are wired in series with this input. Should be on continuously unless a safety device is activated. (N/C)
6	SRD2™ proximity switch input – will be on as long as the bottom rail is latched with the CSE. Removing input will place PLC in "setup" mode and the RESET button will be lit. (N/C)
7	Reset input – will come on when the RESET button is pushed. Activating this input will clear the "setup" mode (reset light is on). If mode does not clear, check alarm light on frequency inverter. (N/O)

² Reference drawing #AF35 when using this chart.

³ N/C – devices connected to this input are wired as normally closed; N/O – devices connected to this input are wired as normally open.

Notes: if the **ALARM LED** on the frequency inverter is on, call the factory for direction. To clear alarm condition, remove power to control panel. The most common cause of an inverter alarm is a motor current overload condition. Ensure that the door is not jammed in any way and will move freely over the entire range of motion when the motor brake is manually released.

RAPID ROLL[®] MODEL 355

INSTALLATION CHECKLIST

Door Serial No. _____					
Date of Installation _____					
Installer's Name _____		Enduser _____			
Company _____					
City _____	State _____	City _____	State _____	Zip _____	
Phone No. _____					

MECHANICAL:

- Crate fully unpacked. Verified door parts against packing list. No parts are missing and they are undamaged.
- Drive unit assembled to top roll assembly.
- Door top roll assembly attached to side frames.
- Side frames are plumb and door top roll assembly is level.
- Door secured to wall along side frames.
- Counter balance spring properly tensioned.
- Door does not bind in any position and has free movement over the entire range of motion.
- Photocells mounted on inside back profiles. (Factory Wired)

ELECTRICAL:

- Fused disconnect installed and properly wired to control panel.
- Three phase power available at control panel.
- Control panel mounted at a serviceable height.
- Drive unit, door limit switches, gearbox disconnect switch, and brake motor kill switch properly wired to control panel.
- Door actuators installed and properly wired to control panel (i.e. pushbuttons, pullswitches, floor loops, etc.).
- Proper phase rotation verified.
- Door limits properly set.
- Gearbox breather plug installed.
- All actuators tested and function properly.
- Door has been cycled at least 10 times to verify proper operation.

Notes: _____

FAX COMPLETED FORM TO ALBANY INTERNATIONAL SERVICE DEPARTMENT AT (770) 338-5034.