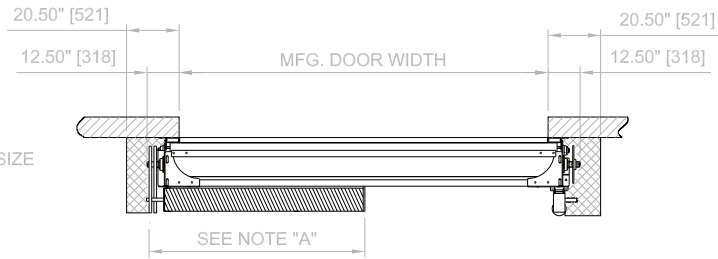
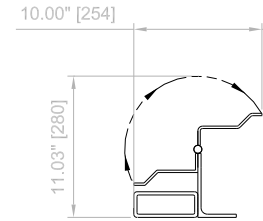


NOTE:  
A. DIMENSION DETERMINED BY DOOR SIZE  
CONTACT FACTORY IF REQUIRED

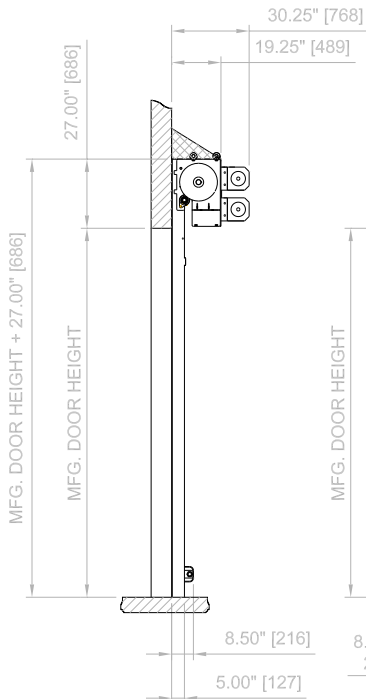


= RECOMMENDED FOR MAINTENANCE,  
REQUIRED FOR COVERS

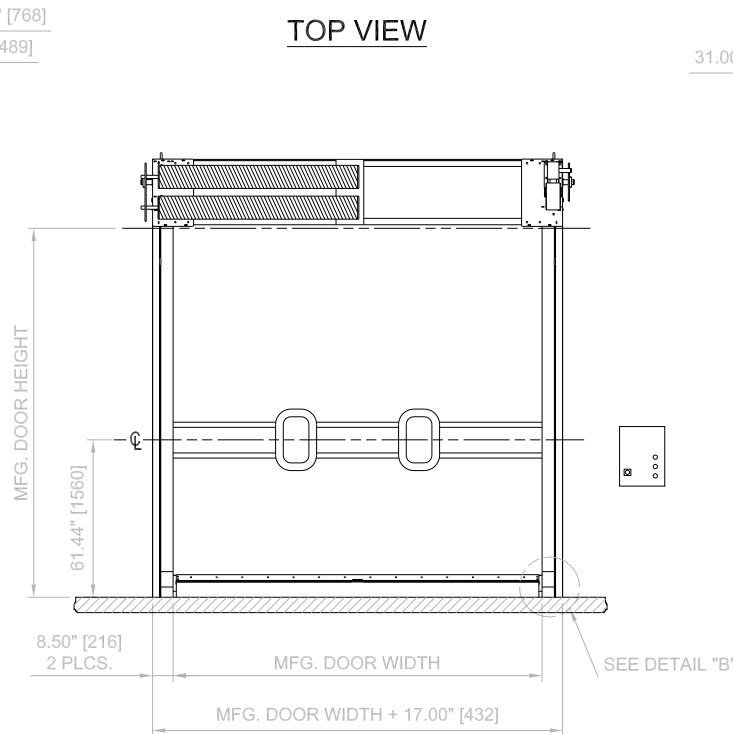
**TOP VIEW**



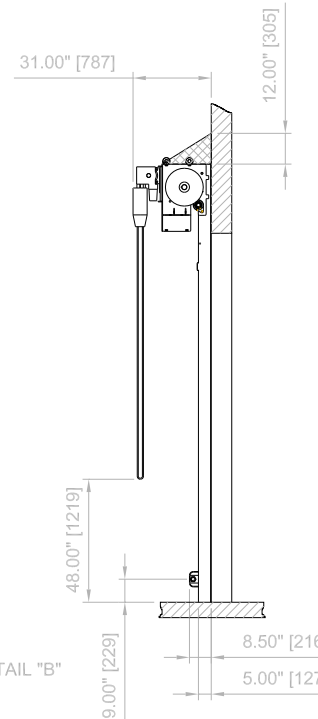
**DETAIL "B"**



**LEFT VIEW**



**FRONT VIEW**



**RIGHT VIEW**

**SPECIFICATIONS & OPTIONS**

OPENING SIZE	W=	H=
MFG. DOOR SIZE	W=	H=
PRIMARY VOLTAGE	208-240	440-480 575-600
DRIVE SIDE - (RH / LH)	OPERATOR SPEED (1/2)	
CONTROL PANEL (ACS 50 / PLC)	SPRINGS	YES
	F.R. COVERS (YES / NO)	
WINDBAR (FRONT / REAR / NO)		
WINDOWS (QTY.) DETERMINED BY MFG. DOOR WIDTH		
FABRIC (BLACK SBR / GRAY EPDM / BLUE EPDM)		
DOOR ACTUATORS (QUANTITY)	PUSHBUTTON	<901>
	PULL SWITCH	<911>
	FLOOR LOOP	<930>
	PHOTOCELLS THRU BEAM	<940>
	MOTION DETECTOR REFLECTIVE	<941>
	MOTION DETECTOR	<950>
	RADIO RECEIVER	<925>

COMMENTS:

**BALANCED UP TO & INCLUDING 12'-0" X 12'-0"**  
**(SPEED ZONE #1 & #5)**

CUSTOMER:		APPROVED BY:		<b>ALBANY</b> DOOR SYSTEMS
LOCATION:		APPROVED WITH CHANGES BY:		
SALESMAN / DEALER:		DATE:	SCALE = N.T.S.	
DESCRIPTION:				
ULTRAQU TOUGH APPROVAL				
DRAWING NO:		DESIGNER:	DATE:	
ULTRA TOUGH-004		J. REITZ	12/07/2007	

Rev	Change	Date	Name