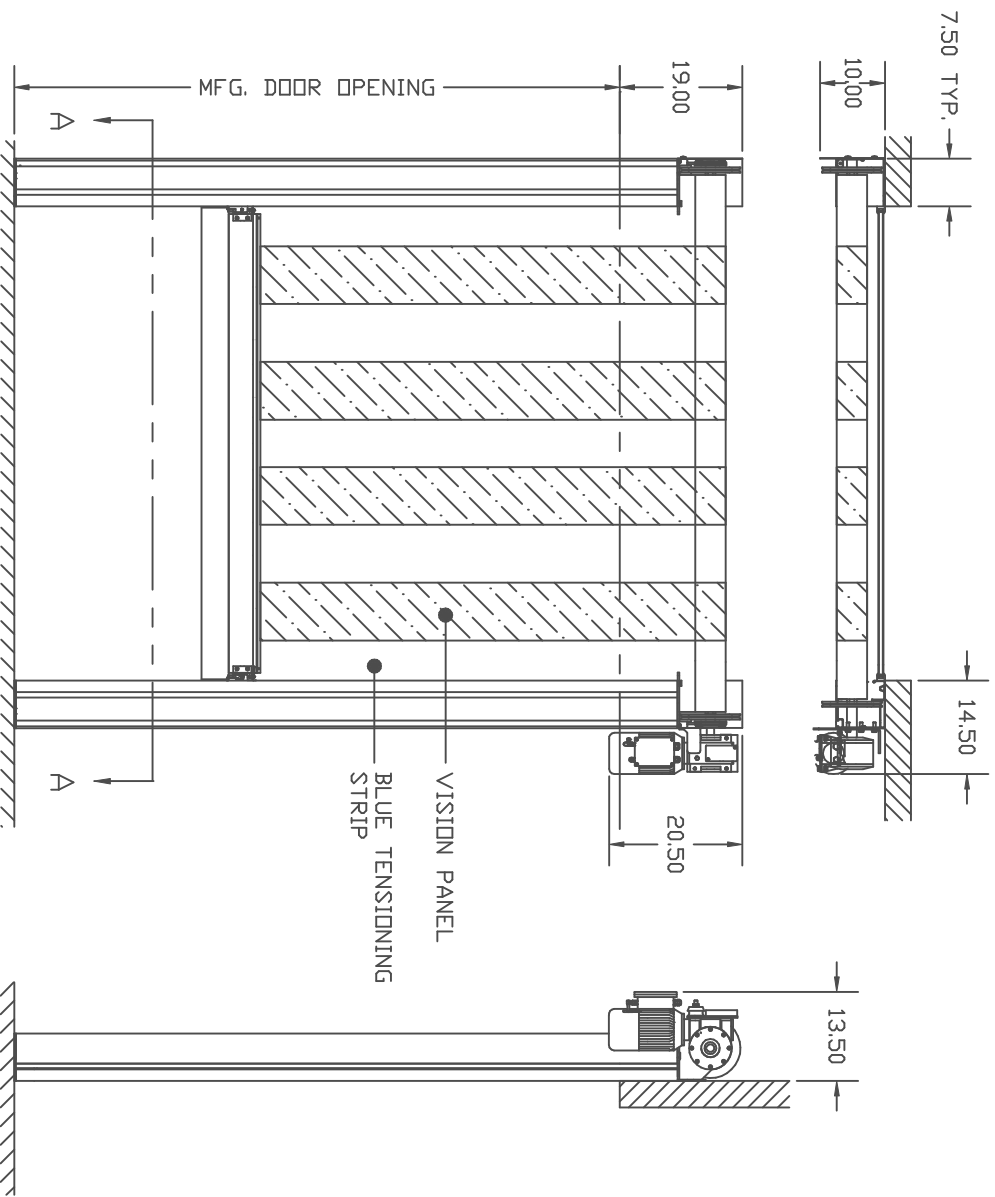


# RAPID ROLL® MODEL 355



OPENING SIZE	W=	H=
MFG. DOOR SIZE	W=	H=
OPERATOR LOCATION	RH	LH
FUNCTION	NON-AUTOMATIC	AUTOMATIC
CONTROL PANEL	ALLSTAR	<695>
PRIMARY VOLTAGE	208-240 V	440-480 V 575 V
DOOR ACTUATORS (QUANTITY)	PUSHBUTTON	<901>
	PULL SWITCH	<911>
	RADIO TRANSMITTER	4-BUTTON <920> 1-BUTTON <921>
	RADIO RECEIVER	<925>
	FLOOR LOOP RECEIVER	24 V <930>
SAFETY PHOTOCELL	THRU-BEAM <940> REFLECTIVE <941>	WIDE <950> NARROW <951>
MOTION DETECTOR		<951>
PRESENCE SENSOR		<955>
COVERS	FULL FOLL COVER	
	MOTOR COVER	
FABRIC	CLEAR PVC WITH CLEAR TENSIONING STRIPS	

COMMENTS:

- NOTES:  
 1) MEASUREMENTS ARE IN INCHES  
 2) UNLESS OTHERWISE NOTED, SHOWN, LEFT HAND CONFIGURATION OPPOSITE

SPACE REQUIRED FOR SIDE FRAME COVER REMOVAL

APPROVED BY: \_\_\_\_\_ APPROVED WITH CHANGES AS NOTED BY: \_\_\_\_\_

CUSTOMER	LOCATION	DATE	DRAWN BY	DATE	REVISION	SCALE	N.T.S.
			JR	11/99	A		

DEALER/SALESMAN: \_\_\_\_\_ DOOR # \_\_\_\_\_

DRAWING NAME: MODEL 355  
 RAPID ROLL DOOR  
 DRAWING NUMBER: 355-0001

**ALBANY INTERNATIONAL**  
 Normaflo Division