



ULTRATOUGH M&I

The Ultimate in High Speed Rubber Doors

▶ TOUGH

The UltraTough M&I is built to withstand the harshest environments.

▶ SPEED

The UltraTough M&I opens at speeds up to 60" per second.

▶ WIRELESS SAFETY SYSTEM

Albany's patent pending Wireless Safety System eliminates costly repairs and downtime associated with coil cords.

▶ PANEL MATERIAL

Two layers of thick SBR and polyester fabric provides superb durability and has a lifetime warranty.

▶ CONTROLS

Albany's ACS-50 controller is reliable, easy to use and includes self testing and self monitoring safety features.

▶ WIND RESISTANT

Patented Windlok design enables the UltraTough M&I to resist high wind pressures.

▶ TRUCKGUARD SAFETY SYSTEM

Intelligent safety light system eliminates contact with objects in the doorway. (Optional)

▶ MAINTENANCE

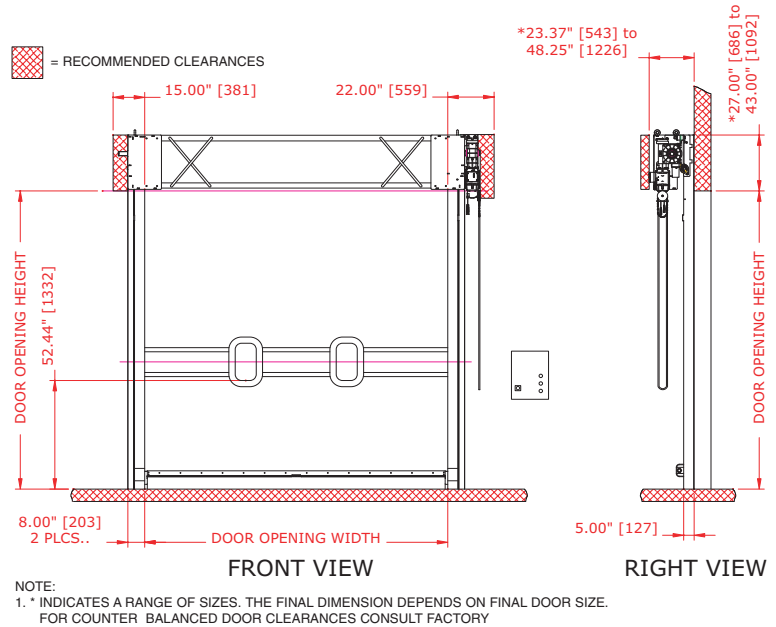
The UltraTough M&I is designed with a direct drive system that uses a minimum number of moving parts, decreasing maintenance costs and increasing door life.

Albany Door Systems' UltraTough M&I Re-Coil-Away, "The World's Toughest High Speed Rubber Door", provides dependable performance in the most rugged industrial applications. The heavy duty side frames, thick rubber curtain and patented windlok design form a near airtight seal and can resist high wind pressures. The UltraTough M&I is designed to last. It is durable, safe, low cost to maintain and can take a hit.



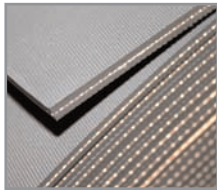
ULTRATOUGH M&I

Albany's UltraTough M&I high speed rubber doors are fast, built to last, and engineered to cycle hundreds of thousands of times.



Springless Design

Springless door design uses a direct drive system that eliminates the need for chains and sprockets, resulting in lower maintenance costs.



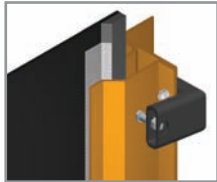
UltraStrong Curtain

The thick two layer SBR and high tensile strength polyester fabric provides superb resilience in harsh environments and has a lifetime warranty.



TruckGuard Safety System (Optional)

Intelligent safety light system eliminates contact with objects in the doorway. Mounted on the side guides, Albany's light system prevents activation due to curtain wind deflection.



Patented Continuous Windlok Design

Albany's continuous windlok design produces near airtight seals and delivers more resiliency against damage, extreme weather, and high windloads.



Heavy Duty Construction

Heavy duty 1/4" structural steel side columns and header. No aluminum.



ACS-50 Controller

The ACS-50 is NEMA-4 rated and CUL listed. LED indicators make trouble shooting simple. Includes self testing and self monitoring safety features, and a rotary disconnect on the enclosure cover.



UltraSmart™ Controller (Optional)

UltraSmart™ walks you through problems on the control screen. Modular design minimizes cost, improves reliability, and offers scalability for future upgrades.



Wireless Safety System

Albany's patent pending Wireless Safety System eliminates costly repairs and downtime associated with coil cords.