



ULTRASECURE 3000

The Ultimate in High Speed Doors

▶ SECURITY

Solid construction consists of compact anodized double-walled aluminum slats, and tight seals.

▶ SPEED

The UltraSecure 3000 opens at speeds up to 80" per second.

▶ CARGUARD SAFETY SYSTEM

Intelligent safety light system eliminates injury to people and damage to vehicles.

▶ WINDLOADS & FLORIDA BUILDING CODES

Standard model is wind resistant up to 90 mph. Certain models meet Florida Building Codes.

▶ CONTROLS

Abany's UltraSmart™ Controller is people friendly and extremely intuitive.

▶ VISUAL APPEAL

Aluminum door design and additional color choices give the door a pleasing appearance that blends with any architectural environment.

▶ WIRELESS SAFETY SYSTEM

Albany's patent pending Wireless Safety System eliminates costly repairs and downtime associated with coil cords.

▶ MAINTENANCE

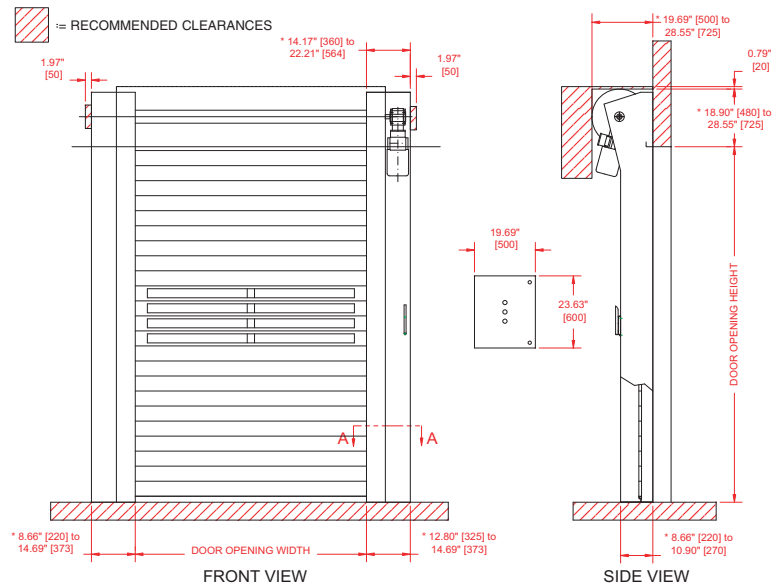
The UltraSecure 3000 is designed with a minimum number of moving parts to decrease maintenance costs and increase door life.

Albany Door Systems' UltraSecure 3000 is perfect for commercial and high security applications where speed is important, looks are critical, traffic is frequent, and door safety concerns are paramount. The bold sleek design adds visual appeal to any architectural environment. Its simple patented design insures hundreds of thousands of maintenance free cycles.



ULTRASECURE 3000

Albany's UltraSecure 3000 metal high speed doors are tough, built to last, and engineered to cycle hundreds of thousands of times.



Stack-Free DiscDrive Design

Patented Stack-Free design prevents metal-to-metal contact during operation, reducing excessive wear, vibration and noise.



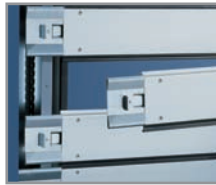
CarGuard Safety System

Intelligent safety light system eliminates injury to people and damage to vehicles. This light barrier offers doorway protection up to approximately six feet.



UltraLift Belt Design

Individual slats are mounted to a high-strength belt that eliminates the need for hinge connections and rollers. Fewer parts mean less maintenance.



UltraEasy Slat Design

Double-walled aluminum slats can be easily replaced if they become damaged. The door remains operational, helping with the slat replacement process.



BacOut™ Safety System

In the event of a power outage the manual release handle enables the door to be opened.



UltraSmart™ Controller

UltraSmart™ walks you through problems on the control screen. Modular design minimizes cost, improves reliability, and offers scalability for future upgrades.



Wireless Safety System

Albany's patent pending Wireless Safety System eliminates costly repairs and downtime associated with coil cords.