



ULTRAFAST™

The Ultimate in High Speed Doors

▶ SPEED

UltraFast™ opens at up to 60 inches per second.

▶ CONTROLS

Albany's UltraSmart™ Controller is people friendly and extremely intuitive. Control box includes an integrated rotary disconnect standard.

▶ VISIBILITY

UltraFast™ offers full width vision standard.

▶ PANEL MATERIAL

Two ply monofilament standard with three ply monofilament and vinyl panels optional. Blue and yellow standard.

▶ MAINTENANCE

The self-repairing UltraFast™ is designed to be low maintenance and cycle hundreds of thousands of times.

▶ BACSEAL™ WEATHER SEAL

The UltraFast™ seal is unmatched. The top header and side frames are sealed tight.

▶ WIRELESS SAFETY SYSTEM

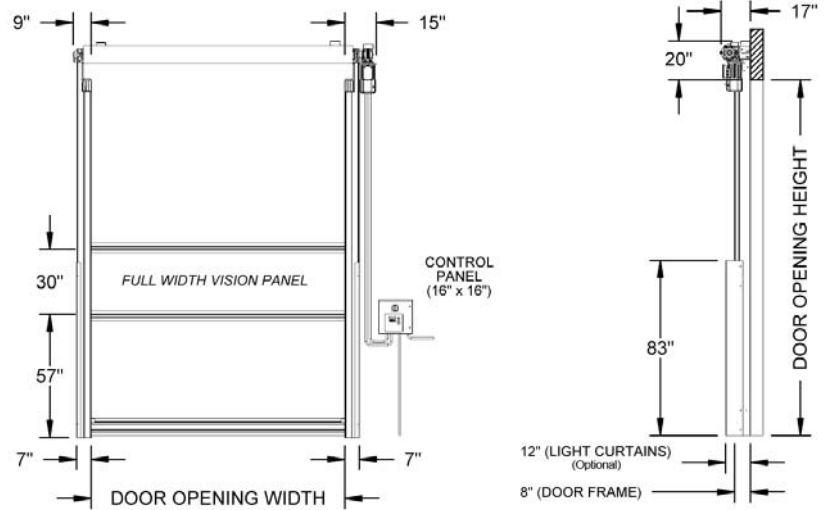
Eliminate coil cords with Albany's patent pending wireless safety system.

Albany Door Systems' self-repairing UltraFast™ high speed door is a work-horse. It was designed specifically for high traffic, heavy duty, industrial and commercial applications. The door can be applied in either interior or exterior applications where moderate wind and/or negative pressure are a problem. When fork-truck traffic is high, maintenance is a concern and safety concerns are at a premium, UltraFast™ is the solution.



ULTRAFAST™

Albany's self-repairing UltraFast™ high speed industrial doors are tough, built to last, and engineered to cycle hundreds of thousands of times.



BacFlap™ Auto-Reset System

When impacted the door panel will automatically reset itself. BacFlaps™ insure against panel tearing.



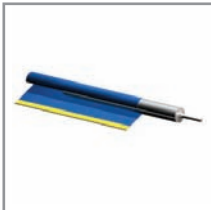
BacLight™ Safety System (Optional)

Albany's exclusive safety light barrier projects a curtain of light approximately six feet tall across both sides of the door panel to prevent injuries.



UltraSmart™ Controller

UltraSmart™ walks you through problems on the control screen. Modular design minimizes cost, improves reliability, and offers scalability for future upgrades.



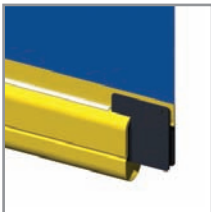
Patent Pending Modular Design

The Albany patent pending extrusion design allows for easy maintenance and repair in the field.



BacOut™ Safety System (Optional)

Counter-Balance design allows the door to be manually raised in the event of a power failure. No manual cranks in the event of an emergency. Availability depends on door size.



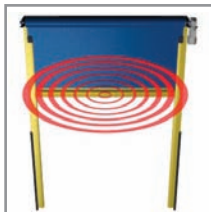
BacTrack™ Soft Bottom Bar (Optional)

Fully padded safety bottom bar that automatically resets after impact. Self-repairing.



BacSeal™ Weather Seal

Double seal on the back spreader bar and double seal on the front extrusions. When the door is down, the panel is sealed.



Wireless Safety System

Cut your cord with Albany's patent pending Wireless Safety System and eliminate costly repairs and downtime associated with coil cords.