



Data Sheet
High Performance Door
RapidRoll® 3000

The Roll Door with DiscDrive™ Technology

The RapidRoll® 3000 enhances security, increases operational savings, lowers maintenance cost and offers reliable performance in high traffic areas.

The unique DiscDrive technology provides extraordinary speed while reducing excessive wear, vibration and noise during operation.



High Performance Door RapidRoll® 3000



ADVANTAGE OF ALBANY RAPIDROLL® 3000

- Patented DiscDrive technology prevents metal to metal contact as the door slats wind onto the top roll. This reduces excessive wear, vibration and noise in high-cycle door operations.
- Low maintenance. The RapidRoll® 3000 has fewer moving parts than other high speed rolling doors. No hinges, wheels or rollers that can be expensive to replace. Fast opening and closing speeds. Saves on utility costs by reducing loss of heating and cooling energy within temperature controlled environments.
- Contactless Safety Edge® detects an object in the door path and reverses the door before the bottom edge can make contact with equipment, vehicles or personnel.

APPLICATION

- High-cycle and high traffic areas where operational reliability is critical and security/access control is a primary requirement.

DESIGN

- Unique disc modules built into the top header wind the slats of the door panel onto the top roll without the slats making contact with each other. The result is less wear on the door panel and operating components.
- A counterbalanced tensioning system provides smooth operation.
- In the event of a power outage the manual release handle (emergency egress) enables the door to be opened.

The side frames are painted 11 gauge galvanized steel with bolt on covers providing an attractive appearance to protect the door counterbalance and tensioning system.

DOOR CURTAIN

- The door panel consists of anodized aluminium slats mounted individually without hinge connections or rollers.
- Flexible rubber provides a tight weather seal between each slat and helps the door panel minimize lasting damage in the event of an accidental impact.
- Aluminium slats enhance wind resistance.
- Individual door slats can be quickly and easily replaced if they become damaged.

DRIVE UNIT

Gear motor. Position can be chosen right- or left-hand.

CONTROL SYSTEM

Frequency converter control system ACS 80.
Please refer to technical data.

MANUAL ACTIVATION

In the event of a power failure the door can be operated by releasing the brake manually. Depending on the width/height ratio, the door opens partly by means of the pre-stressed tension springs.

SAFETY FEATURES

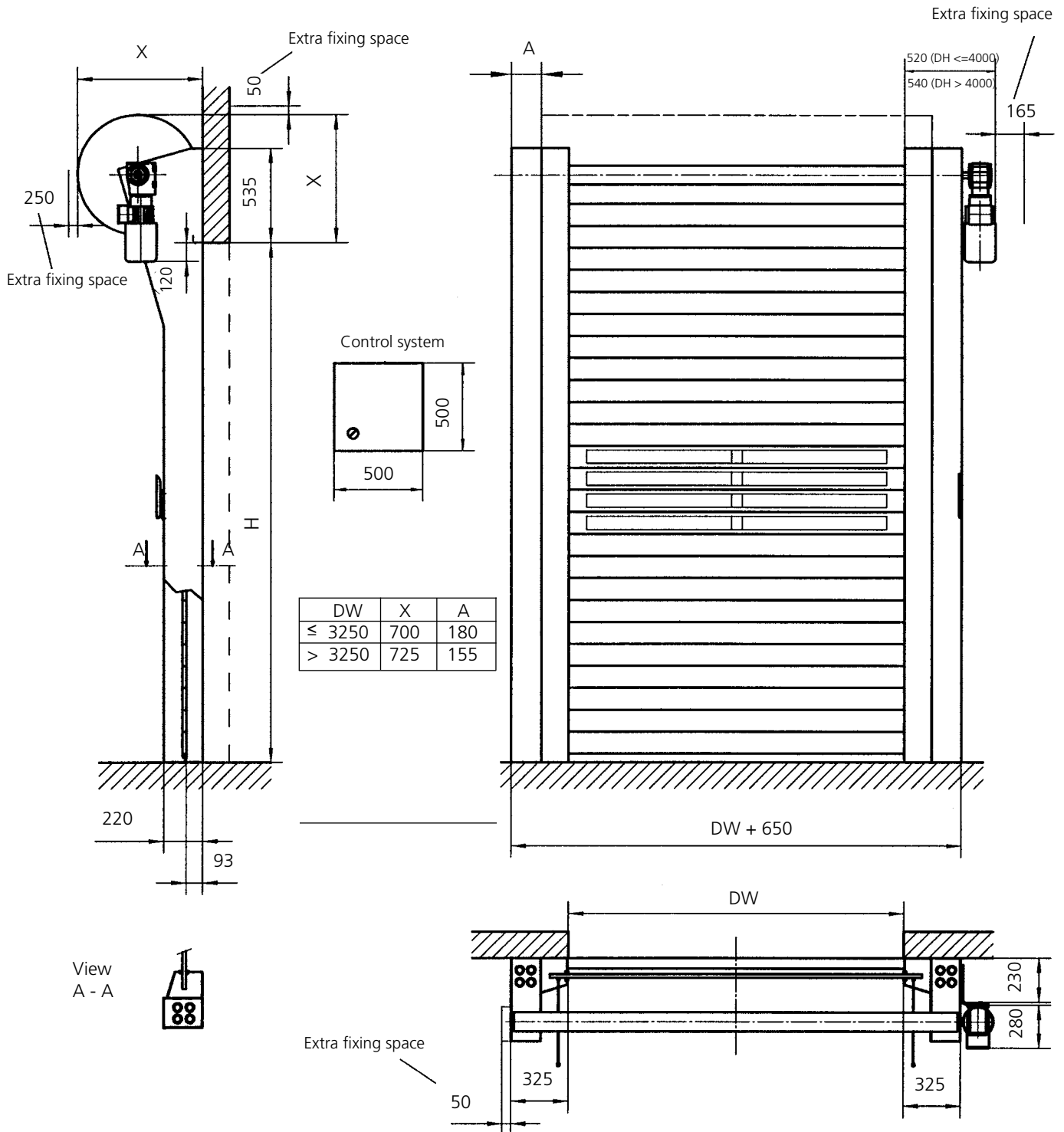
The door is designed according to the regulations of the Workplace Directive of the UVV as well as the harmonized CE Guidelines including the EN 13241-1.

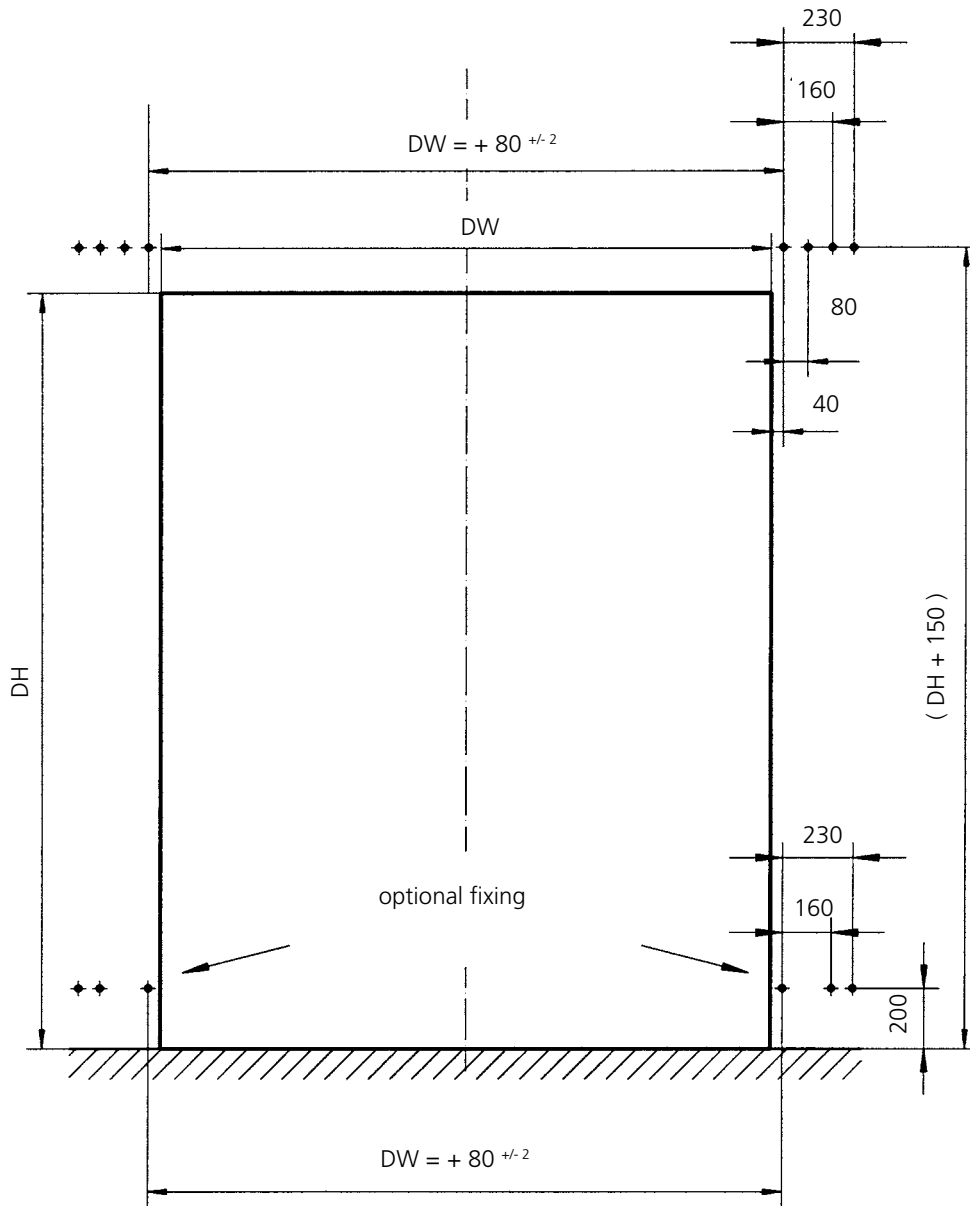
INDICATOR OF RISK

The security of the door is designed for normal use for vehicles in industrial environment corresponding to the harmonized CE-Guidelines. In consideration of the situation on site – especially in case of use by pedestrians – additional safety measures, like additional actuators may be required. In addition, special environmental conditions may have impact on the right choice of doortype. In case of any doubt, please contact our sales engineer to receive consulting on site.

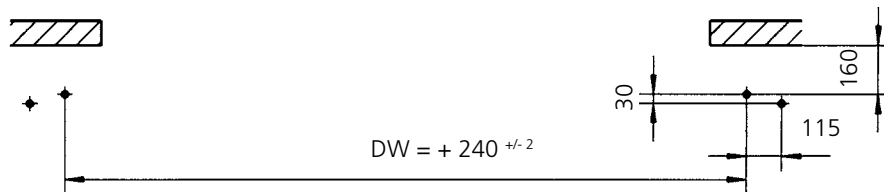
Technical Data	
Exterior door	suitable
Interior door	suitable
Wind resistance	class 3 - EN 12424
Mounting position	inside
Door dimension (mm)	For details please note general drawing!
DW min. / max.	800 / 5000 mm
	DW > 5000 mm - on request
DH min. / max.	1500 / 5000 mm
Opening direction	vertical
Surface side columns	
Galvanised steel	✓
RAL colour paint	•
Aluminium (front covers)	•
Covers (optional)	
Motor cover (plastic, black)	• ¹⁾
Winding module cover	• ¹⁾
Top roll cover	• ¹⁾
Door curtain	
Anodised aluminium	✓
Coloured profiles (RAL)	•
Profiles with windows	•
Lengthened flexible seal	•
Drive unit	electrical
Chain drive	on request
Control system	ACS 80
Motor power / kW	1,1 kW
Additional opening height	✓
Potential free contacts	•
Fuse protection	10 A
Control voltage	24 V DC
Protection degree	IP 55
3/(N)/PE 400V ± 10 %, 50/60 Hz	✓
Safety	
Pre-running safety photocell	✓
Door line photocell	✓
Safety contact edge	—
Curtain tension	✓
Counterbalance	✓
Self opening (partial)	✓
Manual activation	✓ by releasing the brake with bowden lever from floor
Break release lever outside	•
Speed (m/s)	
Open/close up to max.	2,5 / 0,7 m/s
Opening frequency in continuous operation	
≤ 2 per minute	✓
> 2 per minute	•
Traffic light function	
Without direction detection	•
With direction detection	•
Flashing alarm light	•
Error message	plain text
• Option ✓ Standard — currently not available	

¹⁾ For doors of height ≤ 2500 mm the use of top roll and motor cover is required according to standard EN 13241-1.





fixing screws M 12 or comparables



DISCDRIVE™

The DiscDrive™ technology prevents metal to metal contact as the door profiles wind onto the top roll, reducing excessive wear, vibration and noise.

TOP ROLL COVERS¹⁾

Optional top roll covers are available for additional door protection (not pictured here).

AESTHETICALLY PLEASING

The sleek aluminium door design and additional colour choices give the door a pleasing appearance.

WEATHER SEALS

Flexible rubber provides a tight weather seal between each slat and helps the door panel minimize damage in the event of accidental impact.

SIDE FRAME

The side frame are made of galvanised steel with bolt on covers to provide an attractive appearance and protect the door counterbalance and tensioning system.

CURTAIN

The door panel consists of anodised double-walled aluminium slats mounted individually without hinge connections or rollers.

CONTACTLESS SAFETY EDGE

The patented pre-running photo cell detects an object in the door path and immediately reverses the door before contact.



COUNTERBALANCED TENSIONING SYSTEM

A counterbalanced tensioning system provides smoother operations and enables manual opening of the door in the event of a power outage.

ACTUATORS

Depending on each individual application various additional safety-devices like infrared or radar detectors and all kind of industrial actuators (push button, vehicle detector loops, radio transmitter) can be added to the control system. Please contact us for counselling and providing your individual configuration.

Notes:

¹⁾ For doors of height ≤ 2500 mm the use of top roll and motor cover is required according to standard EN 13241-1.

Products shown may include optional accessories.



DISCDRIVE™

This patented technology reduces excessive wear, vibration and noise during high-cycle operation.



ANODISED ALUMINIUM PROFILES

The door curtain consists of double-walled aluminium profiles. Profiles with windows are available as option.



INTERCHANGEABLE DOOR PROFILES

Individual profiles can be replaced if they become damaged.



CONTACTLESS SAFETY EDGE

This patented pre-running safety photocell reverses the door if an object is in the door path to prevent contact.



Products shown may include optional accessories.

ALBANY DOOR SYSTEMS

ASIA

KIARA PARK 174-1-7 • JLN. BURHANUDDIN HELMI
TTDI, 60.000 KUALA LUMPUR
PHONE: +60 (0) 3 77 27 01 84 • FAX: +60 (0) 3 77 27 01 84
INFO.ADS.MY@ALBINT.COM

AUSTRALIA

23 FAUNCE ST. WEST GOSFORD • 2250 NSW
PHONE: +61 (0) 2 / 43 23 23 86 • FAX: +61 (0) 2 / 43 29 11 45
SALES.ADS.AU@ALBINT.COM

GERMANY

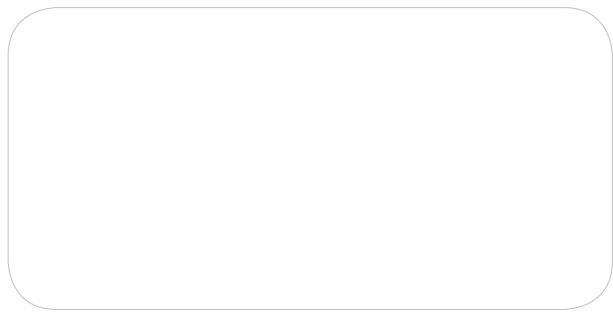
AM MONDSCHEN 25 • 59557 LIPPSTADT
PHONE: +49 (0) 29 41 / 766-0 • FAX +49 (0) 2941 / 766-294
VERKAUF.ADS.DE@ALBINT.COM

SWEDEN

BOX 509 • S - 301 80 HALMSTAD
PHONE: +46 (0) 35/14 73 00 FAX: +46 (0) 35/14 73 99
SALES.ADS.SE@ALBINT.COM

USA

975-A OLD NORCROSS ROAD • LAWRENCEVILLE • GA 30045-4321
PHONE: +1 (0) 7 770 / 338 / 5000 • FAX: +1 (0) 770/338/5024
SALES.ADS.US@ALBINT.COM



In most countries our doors are available through subsidiaries or representatives, see

WWW.ALBANYDOORS.COM